



For Sale
£875,000
SUBJECT TO CONTRACT

Belsize Avenue

BELSIZE PARK LONDON NW3 4BJ

KEY FEATURES

- Two Bedroom
- Two Bathroom
- Share Of Freehold
- Communal Gardens
- Third Floor

An exceptional two-bedroom, third-floor apartment set within Hillfield Court, a purpose-built block in the heart of prime Belsize Park.

This elegant and stylish apartment has recently undergone a full refurbishment and offers well-proportioned accommodation throughout. The property features a fantastic living and dining room, alongside a separate fully fitted bespoke kitchen.

The principal bedroom benefits from fitted wardrobes and a luxurious en-suite shower room, while the second double bedroom also includes fitted wardrobes and is served by a contemporary family bathroom.

Further benefits include high-quality finishes, bespoke joinery throughout, and beautifully maintained communal gardens directly outside the building, enhancing the home's overall comfort and sophistication.

Hillfield Court is ideally located on Belsize Avenue, just moments from the local amenities of Belsize Park High Street and within close proximity to Belsize Park Underground Station.



OAKHILL





OAKHILL



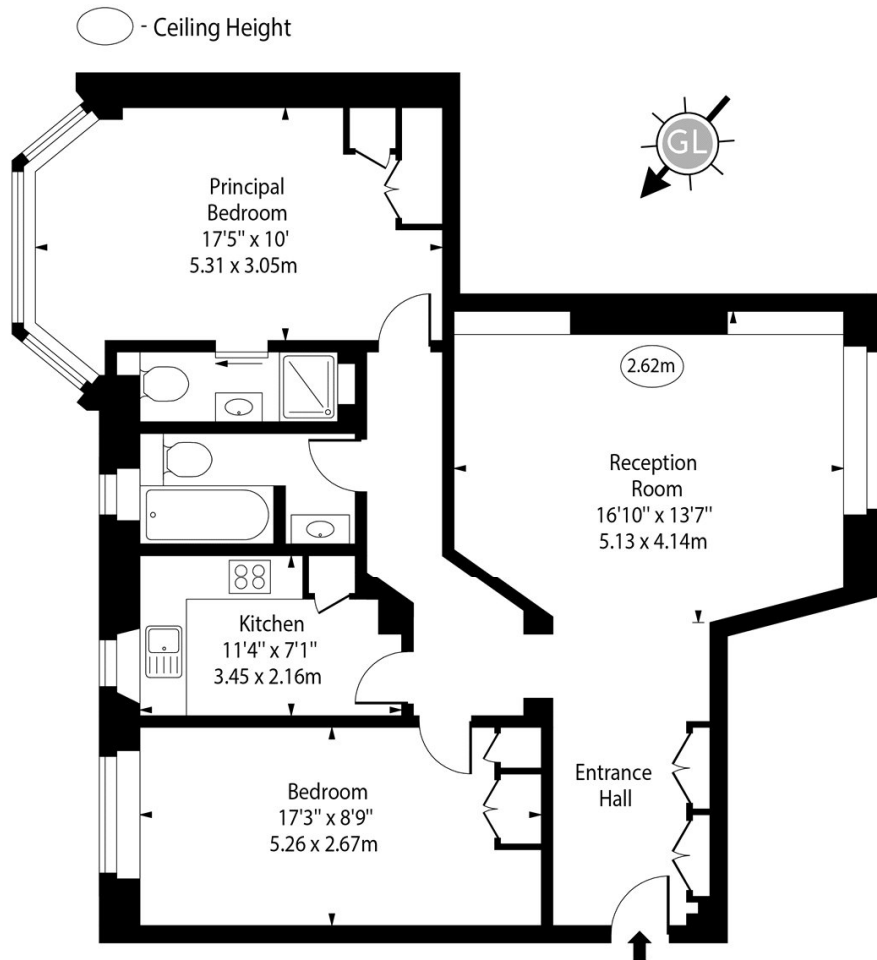


OAKHILL





Hillfield Court, NW3



Third Floor

Approx Gross Internal Area 880 Sq Ft - 81.75 Sq M

Every attempt has been made to ensure the accuracy of the floor plan shown. However, all measurements, fixtures, fittings, and data shown are approximate interpretations and for illustrative purposes only. Measured according to the RICS. Not To Scale.

www.goldlens.co.uk
Ref. No. 031533K

Agents Note: Whilst every care has been taken to prepare these sales particulars, they are for guidance purposes only. All measurements are approximate are for general guidance purposes only and whilst every care has been taken to ensure their accuracy, they should not be relied upon and potential buyers are advised to recheck the measurements