



FOR SALE
£1,095,000
SUBJECT TO CONTRACT

KEY FEATURES

- EPC Rating: To be confirmed
- Aylestone Place
- Warm Oak Herringbone flooring
- Italian Kitchens
- Arabescato Crema stone worktop
- Siemens and Bosch appliances
- Franke Maris Instant Hot Tap
- Private Outdoor Space
- Long Lease

Brondesbury Park

LONDON NW6 7DN

Aylestone Place is an exclusive development of just nine beautifully crafted homes, comprising six luxury apartments and three spacious family houses, all set within a contemporary and elegantly designed building.

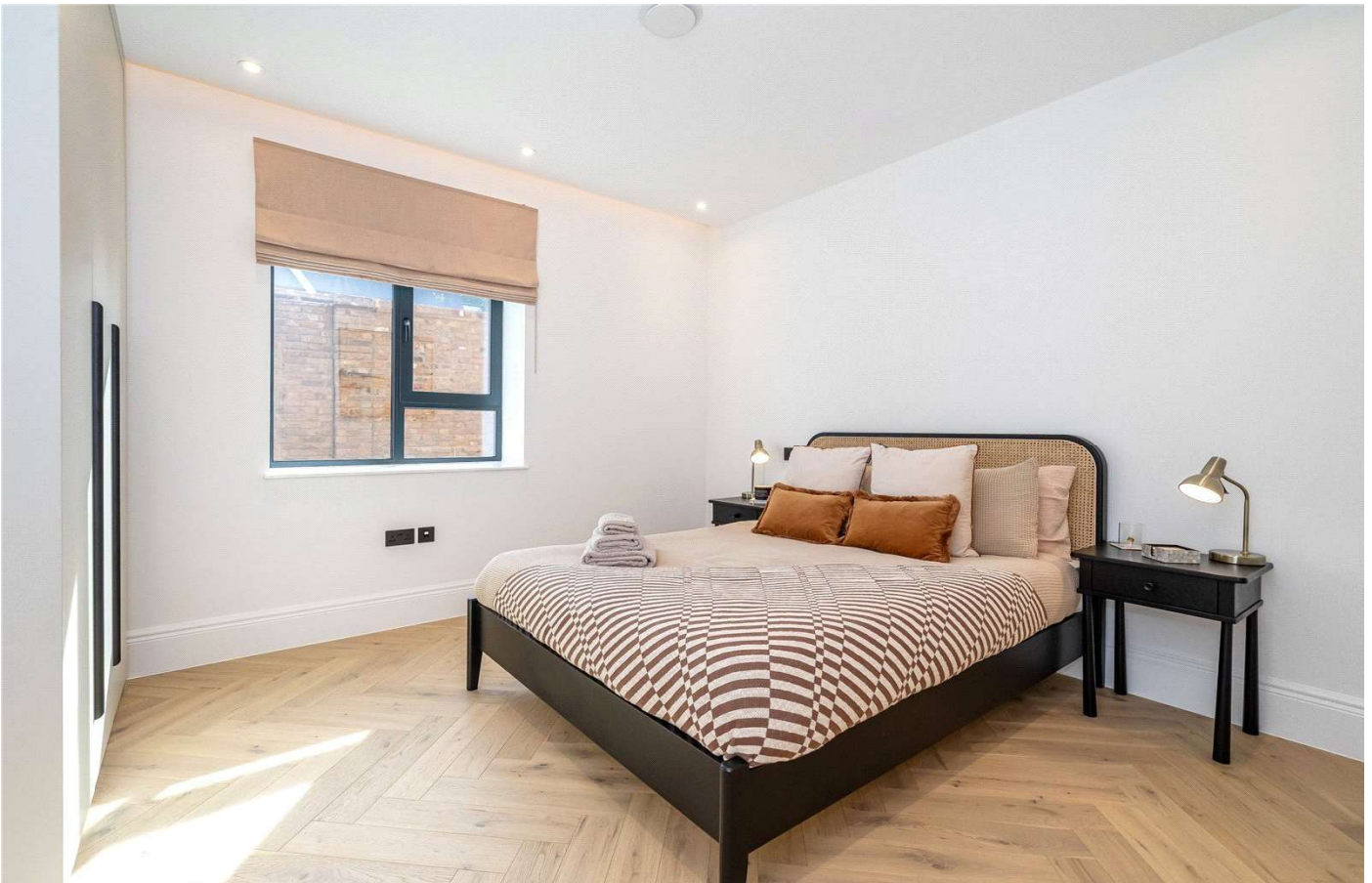
This exceptional three-bedroom apartment, located on the ground floor, offers an impressive blend of luxury, comfort, and thoughtful design. The apartment features three generously sized bedrooms, each with bespoke fitted wardrobes. Both the principal bedroom and the second bedroom benefit from stylish en-suite shower rooms complete with rainfall showers. There is also a beautifully appointed family bathroom featuring a bathtub with shower attachments.

The heart of the home is the spacious open-plan kitchen, living, and reception area. The bespoke kitchen is equipped with high-specification appliances, Franke Maris Instant Hot Tap, and an advanced lighting system throughout. This versatile living space has been carefully designed to accommodate both relaxing and entertaining, with sliding doors that open onto a private terrace — perfect for al fresco dining and outdoor enjoyment.

Further benefits include a long lease, eligibility for residents' permit parking, and an exceptionally high-quality finish throughout.



OAKHILL





OAKHILL





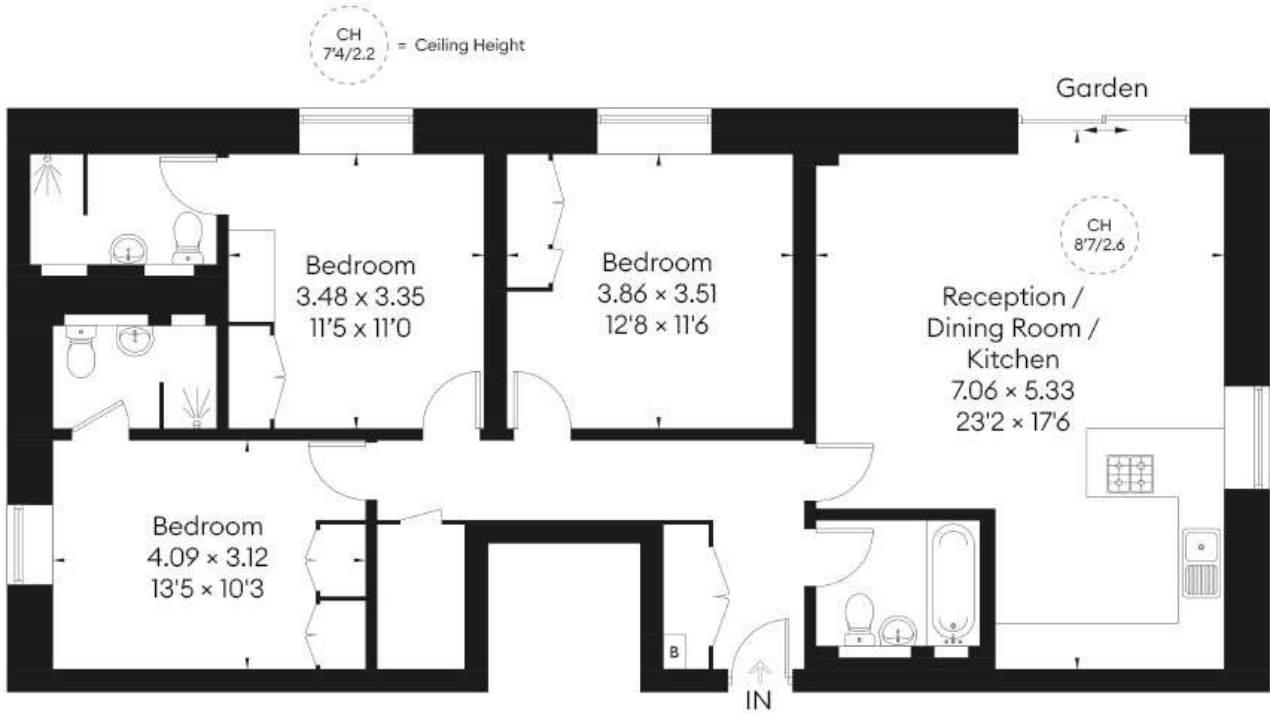
OAKHILL





Aylestone Place, Brondesbury Park

Approximate Gross Internal Area
1072 sq. ft. (99.6 sq. m.)



Ground Floor

This plan is for layout guidance only. Not drawn to scale unless stated. Windows and door openings are approximate. Whilst every care is taken in the creation of this plan, please check all dimensions, shapes and compass bearings before making any decisions reliant upon them.
ID 12216568

Agents Note: Whilst every care has been taken to prepare these sales particulars, they are for guidance purposes only. All measurements are approximate are for general guidance purposes only and whilst every care has been taken to ensure their accuracy, they should not be relied upon and potential buyers are advised to recheck the measurements