



OAKHILL



FOR SALE
£500,000
SUBJECT TO CONTRACT

KEY FEATURES

- EPC Rating: To be confirmed
- One Bedroom Apartment
- One Bathroom
- Spacious & Bright
- Charming
- Meticulously Designed
- Leasehold

The Vabel // Chamberlayne

KENSAL RISE LONDON NW10 5LE

Set within The Vabel Chamberlayne, an exceptional development by the acclaimed Vabel, this beautifully crafted one bedroom apartment offers contemporary living in the heart of Kensal Rise.

Thoughtfully designed with every detail in mind, this exceptional home maximises space and natural light, creating a warm and inviting atmosphere. The heart of the apartment is the spacious open-plan living, kitchen, and dining area, featuring floor-to-ceiling windows that fill the space with light and open onto a private covered balcony.

The bedroom includes a built-in wardrobe area and direct access to a beautifully finished family bathroom, complete with both a bath and separate shower, as well as bespoke terrazzo vanity units. Residents also enjoy access to a beautifully landscaped courtyard, offering a peaceful outdoor retreat.

Ideally located in the heart of Kensal Rise, one of northwest London's most sought-after neighbourhoods, the apartment is surrounded by vibrant cafés, boutique shops, and welcoming local pubs. Excellent transport links, including the Overground and Underground, make commuting effortless.

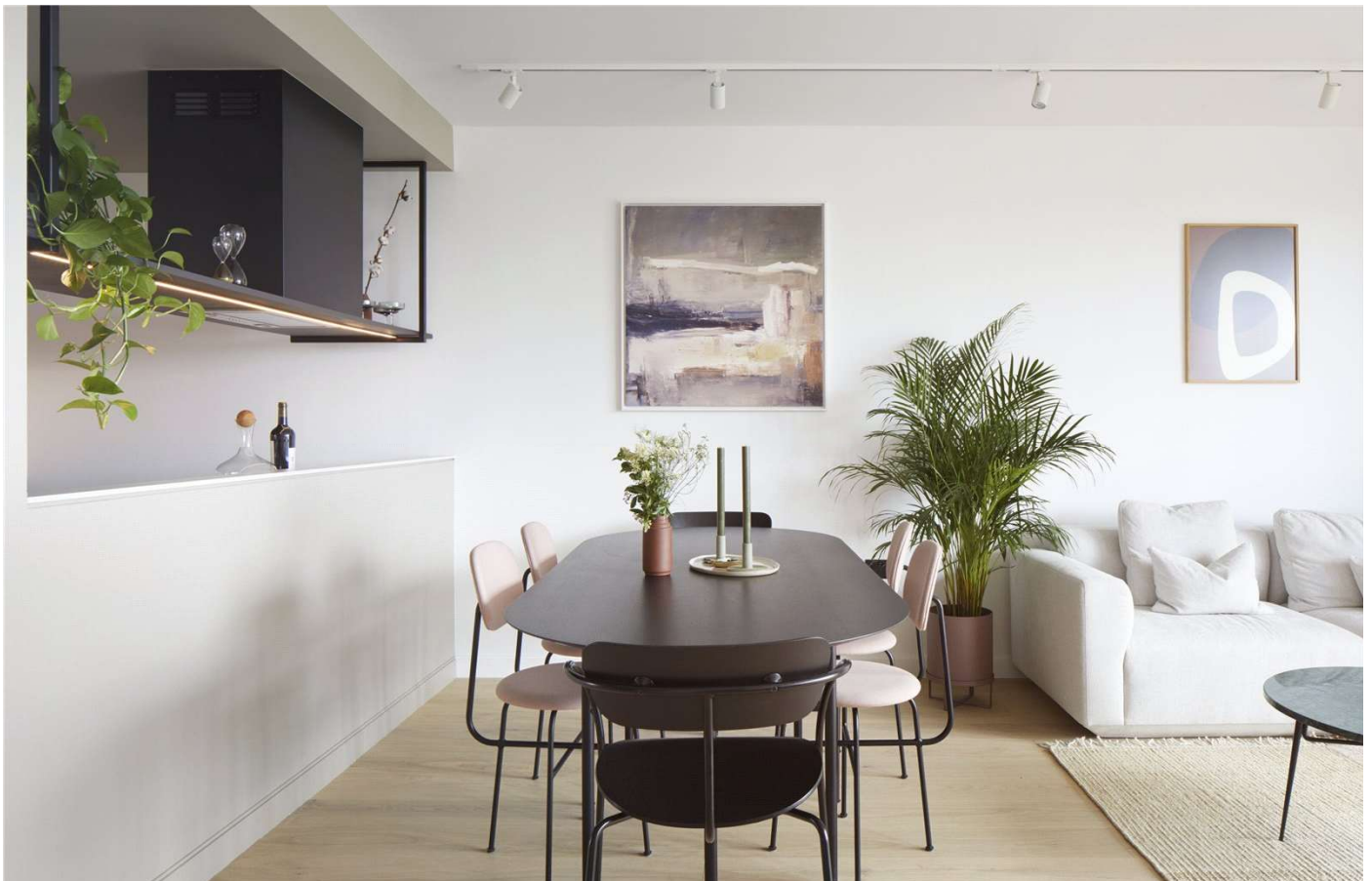


OAKHILL





OAKHILL





OAKHILL





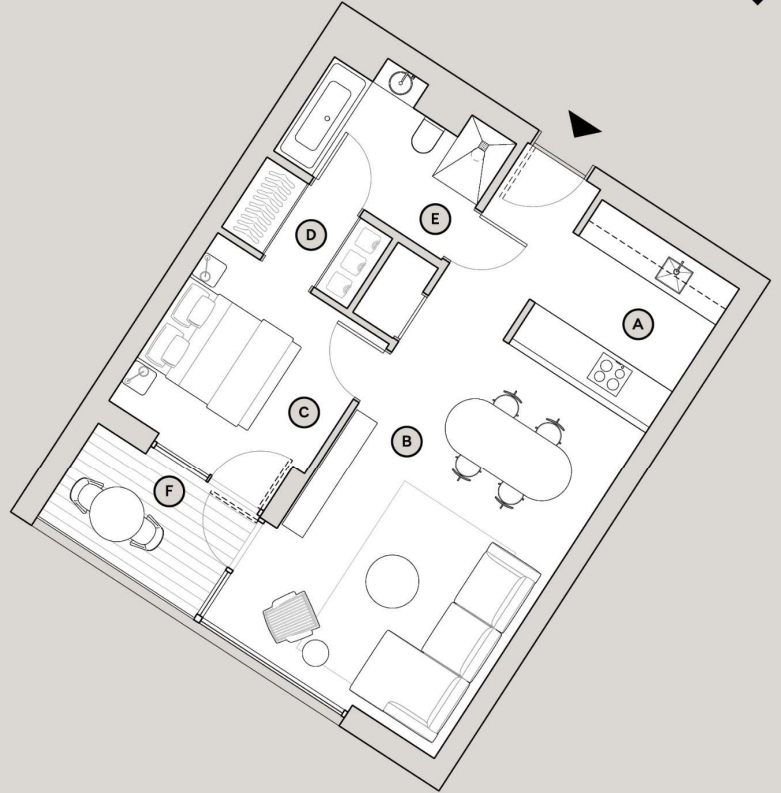
One Bedroom Apartment

Internal Area: 55sqm / 591 sqft

External Area: 5sqm / 55 sqft

Level: 1, 2, 3

A	Kitchen	2.6 × 2.5 m	8.5 × 8.2 ft
B	Reception & Dining	6.0 × 3.9	20.0 × 12.8
C	Bedroom	3.2 × 3.0	10.5 × 9.8
D	Walk-in Wardrobe	2.3 × 1.3	7.5 × 4.3
E	Bathroom	3.0 × 2.0	9.8 × 6.6
F	Balcony	2.8 × 1.8	9.2 × 5.9



Agents Note: Whilst every care has been taken to prepare these sales particulars, they are for guidance purposes only. All measurements are approximate and for general guidance purposes only and whilst every care has been taken to ensure their accuracy, they should not be relied upon and potential buyers are advised to recheck the measurements