



FOR SALE
£599,950
SUBJECT TO CONTRACT

Woodchurch Road

SOUTH HAMPSTEAD LONDON NW6 3PN

KEY FEATURES

- Two bedroom apartment
- Open plan kitchen/living room
- Family bathroom
- Large, private roof terrace
- Fitted appliances
- Communal gardens
- Quiet residential street

Introducing this charming 2-bedroom, top floor apartment in the picturesque, tree lined street of Woodchurch Road in South Hampstead.

This is a truly unique apartment with the master bedroom having direct access to a large, private roof terrace overlooking the glorious gardens and beyond. There is a further second bedroom of great size, family bathroom and bright kitchen/living room with breakfast bar and ample storage and entertaining space.

This south facing apartment offers an abundance of natural sunlight throughout, and a quiet sanctuary to unwind in after a busy day.

It is easy to forget that you are only minutes away from the buzz of West End Lane and the plethora of shops and restaurants West Hampstead has to offer. As well as being a 5-minute walk to West Hampstead tube station and overground, Thameslink and close by to Finchley Road underground. A commuter's dream!



OAKHILL



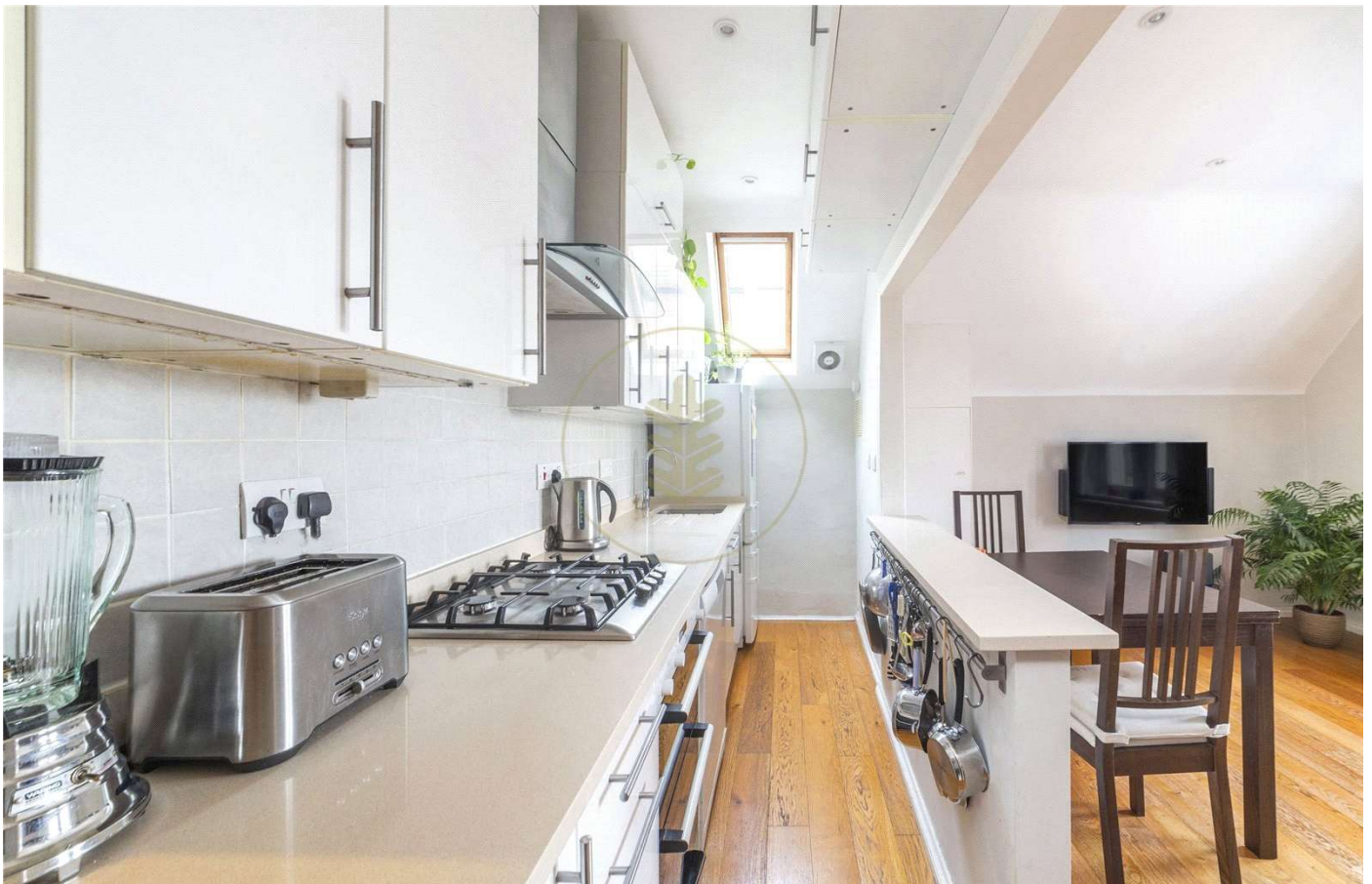


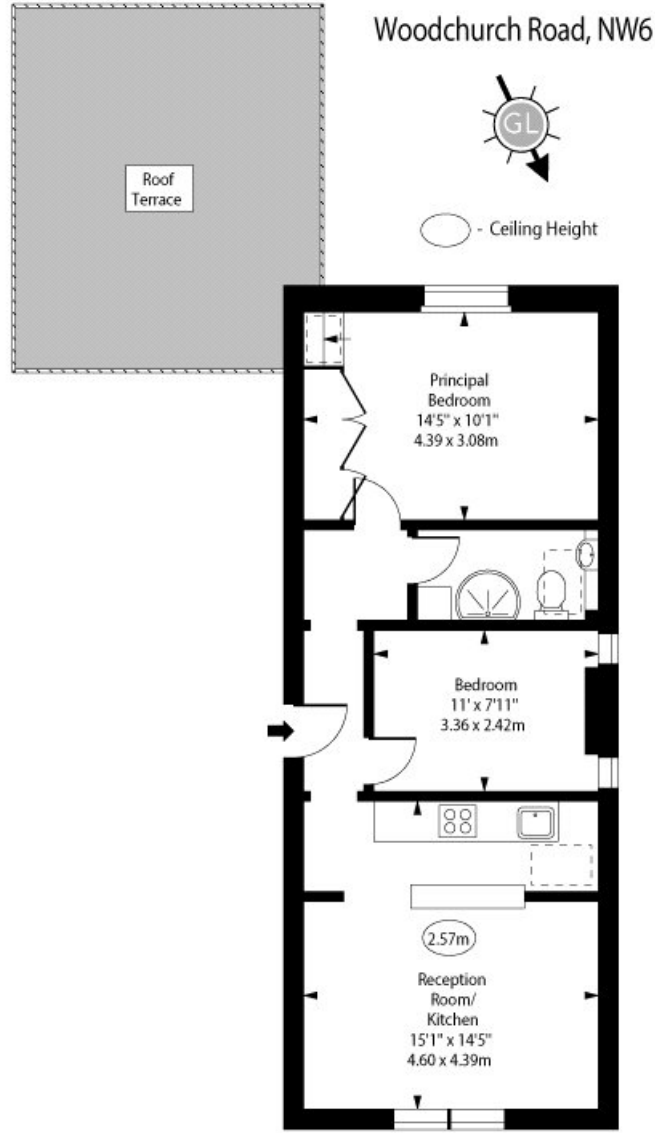
OAKHILL





OAKHILL





Second Floor

Approx Gross Internal Area 563 Sq Ft - 52.30 Sq M

For Illustration Purposes Only - Not To Scale
www.goldlens.co.uk
Ref. No. 023357MS

Energy Efficiency Rating		Current	Potential
Very energy efficient - lower running costs			
(92+)	A		
(81-91)	B		
(69-80)	C		77
(55-68)	D	63	
(39-54)	E		
(21-38)	F		
(1-20)	G		
Not energy efficient - higher running costs			
England, Scotland & Wales		EU Directive 2002/91/EC	

Agents Note: Whilst every care has been taken to prepare these sales particulars, they are for guidance purposes only. All measurements are approximate are for general guidance purposes only and whilst every care has been taken to ensure their accuracy, they should not be relied upon and potential buyers are advised to recheck the measurements