



FOR SALE
£750,000
SUBJECT TO CONTRACT

Madoc Close

LONDON NW2 2BG

KEY FEATURES

- EPC Rating: B
- Two Bedroom
- Two Bathroom
- Designated Parking
- Gated Development
- Share Of Freehold

Nestled within the prestigious gated Tudor House development, this exceptional ground-floor apartment offers an elegant blend of luxury and modern comfort. Boasting two spacious bedrooms and two bathrooms, the property also benefits from secure off-street parking.

The apartment features generously proportioned living areas, highlighted by a beautifully designed open-plan kitchen, dining, and living space perfect for both relaxing and entertaining. The principal bedroom includes built-in wardrobes and a stylish en-suite bathroom with both a bath and separate shower. The second bedroom also enjoys its own en-suite, while a guest washroom and ample storage enhance the practicality of the home.

Additional features include underfloor heating, a high-specification audio-visual and home automation system, and advanced lighting controls, all contributing to a refined contemporary living experience.

Ideally situated, Tudor House is within easy reach of Hampstead Heath, the charming amenities of Hampstead Village, and excellent transport connections, making it a highly desirable location.

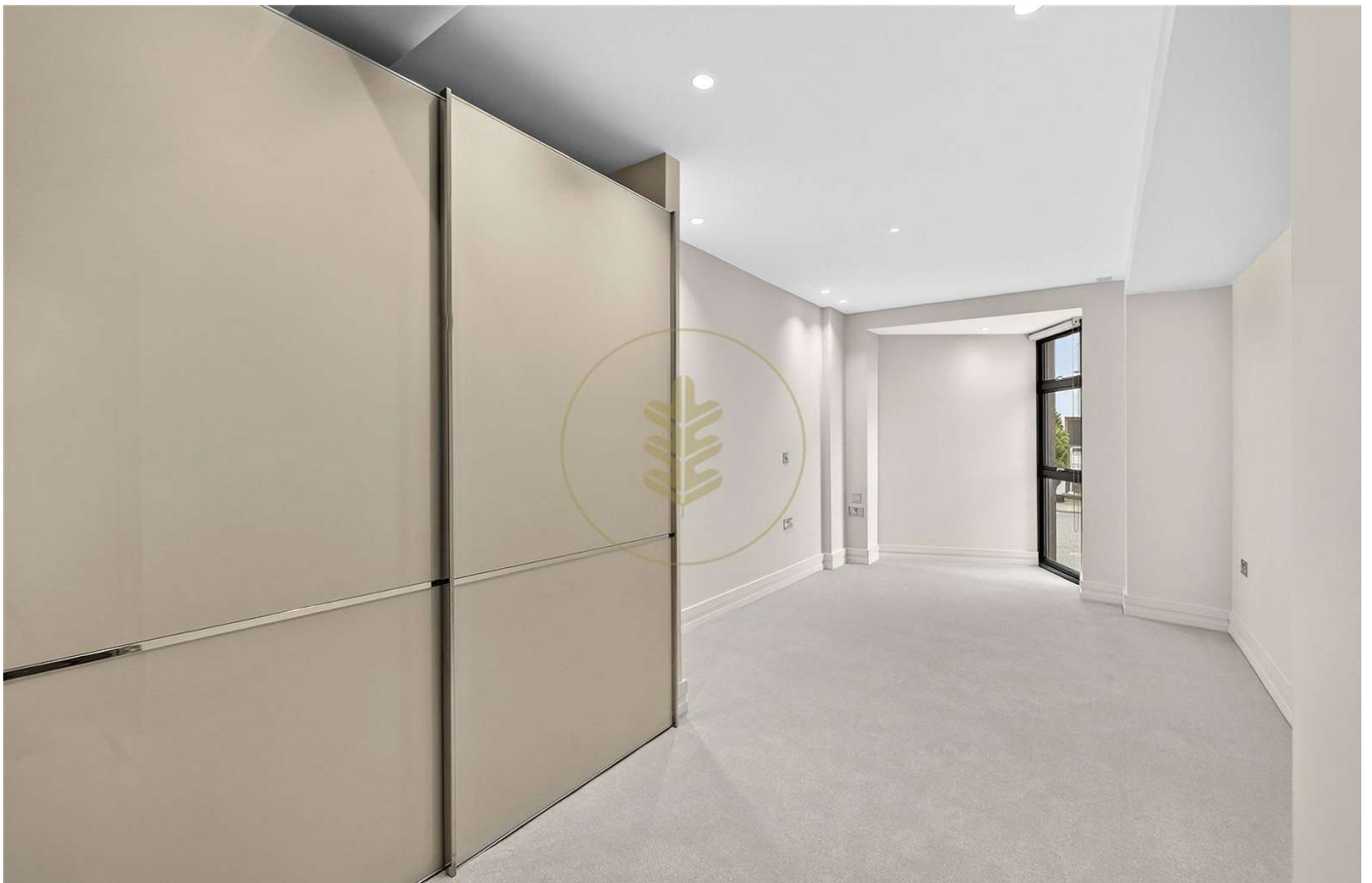


OAKHILL



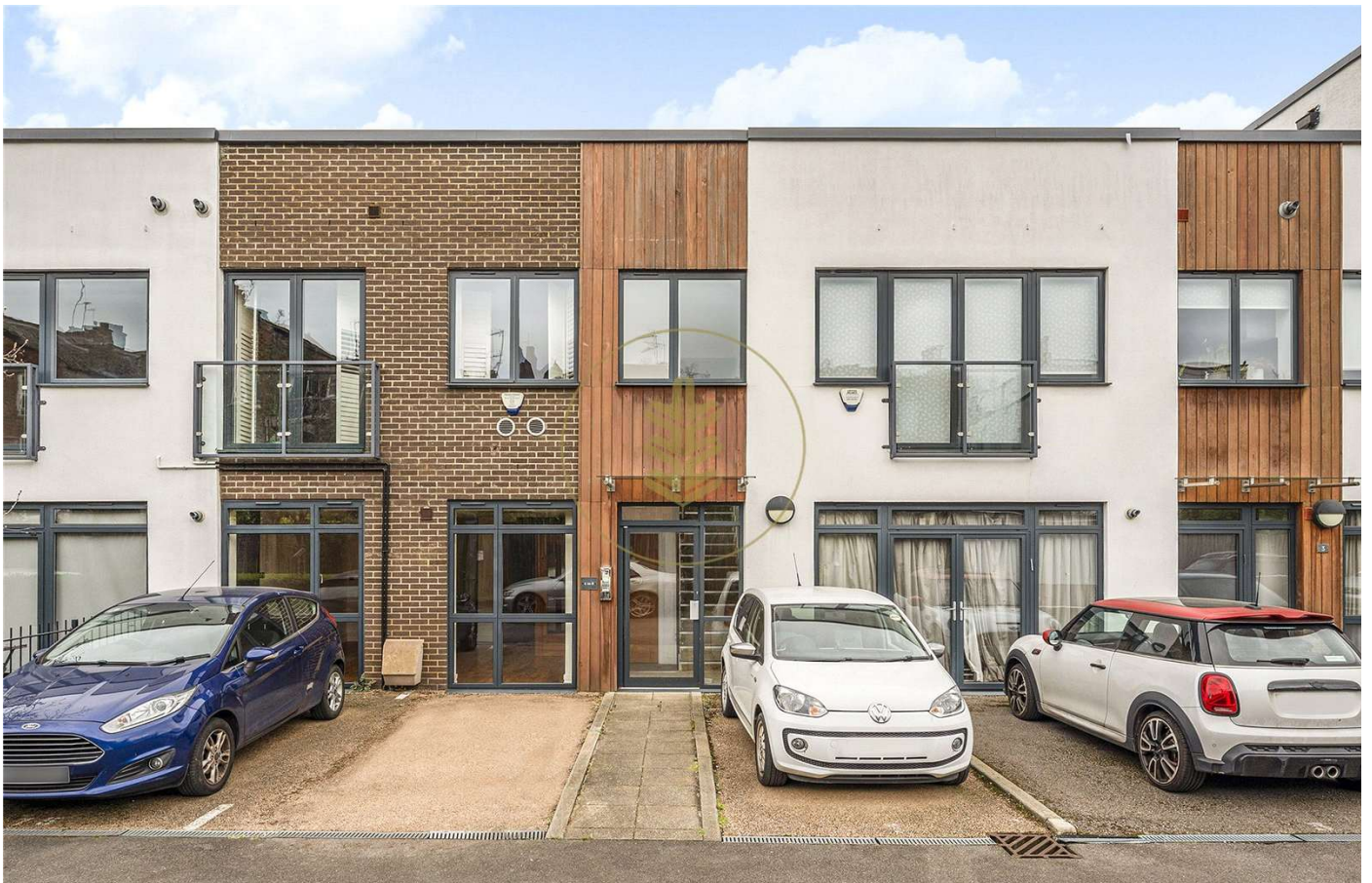
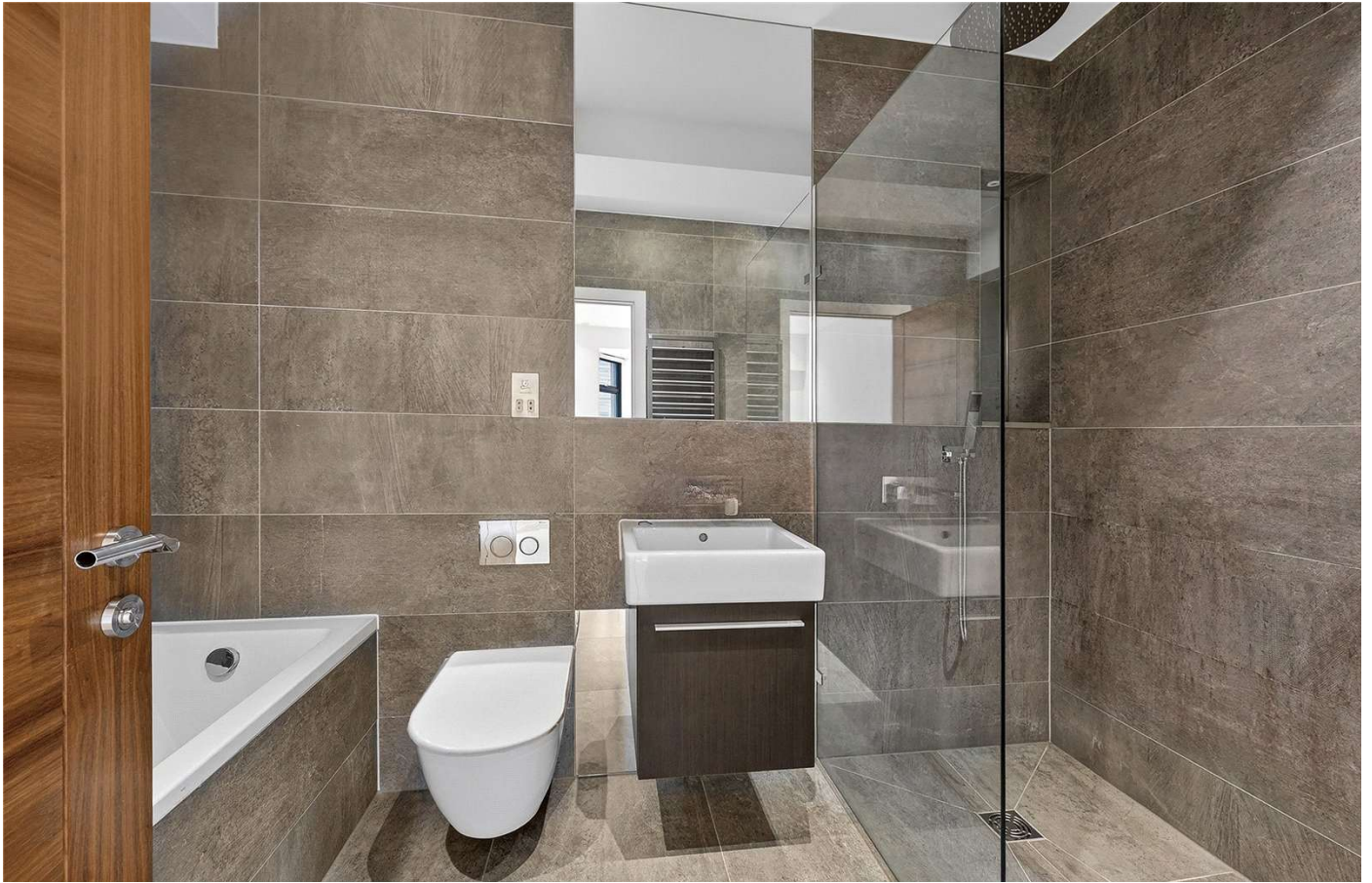


OAKHILL

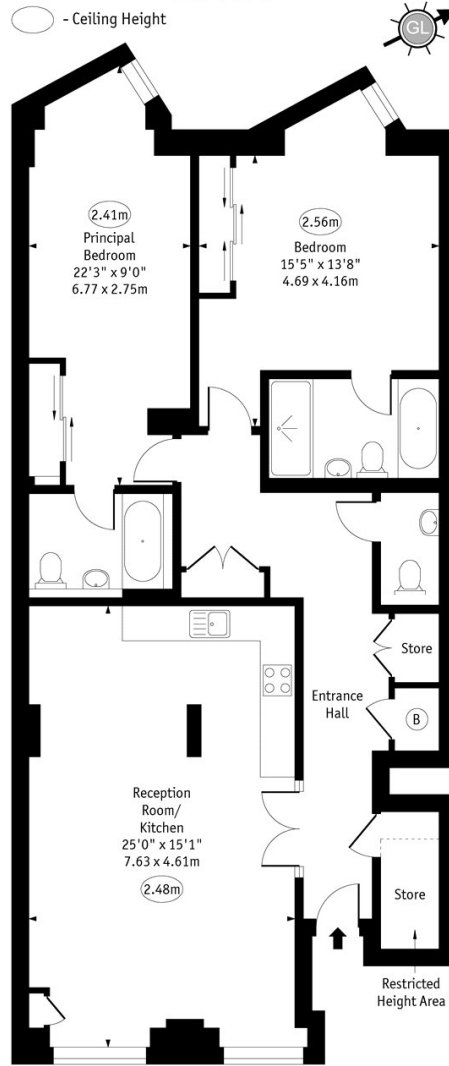




OAKHILL



Tudor House,
Madoc Close, NW2



Ground Floor

Approx Gross Internal Area 1138 Sq Ft - 105.72 Sq M
 Approx. Floor Area Including Restricted Heights 1160 Sq Ft - 107.76 Sq M

Every attempt has been made to ensure the accuracy of the floor plan shown.
 However, all measurements, fixtures, fittings, and data shown are approximate interpretations and
 for illustrative purposes only. Measured according to the RICS. Not To Scale.
 www.goldens.co.uk
 Ref. No. 0310603H

Score	Energy rating	Current	Potential
92+	A		
81-91	B	84 B	84 B
69-80	C		
55-68	D		
39-54	E		
21-38	F		
1-20	G		

Agents Note: Whilst every care has been taken to prepare these sales particulars, they are for guidance purposes only. All measurements are approximate are for general guidance purposes only and whilst every care has been taken to ensure their accuracy, they should not be relied upon and potential buyers are advised to recheck the measurements