



FOR SALE
£599,950
SUBJECT TO CONTRACT

Cleve Road

SOUTH HAMPSTEAD LONDON NW6 3RR

KEY FEATURES

- EPC Rating: To be confirmed
- Two Bedroom
- Two Bathroom
- Second Floor
- Period Property

A Charming Two-Bedroom Apartment on One of South Hampstead's Finest Roads

Set on the second floor of an imposing period conversion on Cleve Road, this well-proportioned apartment offers elegant living in a prime South Hampstead location.

The property features a spacious reception room with generous ceiling height and a door leading into a separate, fully fitted kitchen. The principal bedroom benefits from an en-suite bathroom complete with both a bath and shower attachments, while a second double bedroom is served by a stylish family shower room.

Additional highlights include excellent storage throughout and the characterful charm typical of period architecture, making this a wonderful home or investment opportunity in one of NW6's most sought-after addresses.



OAKHILL





OAKHILL





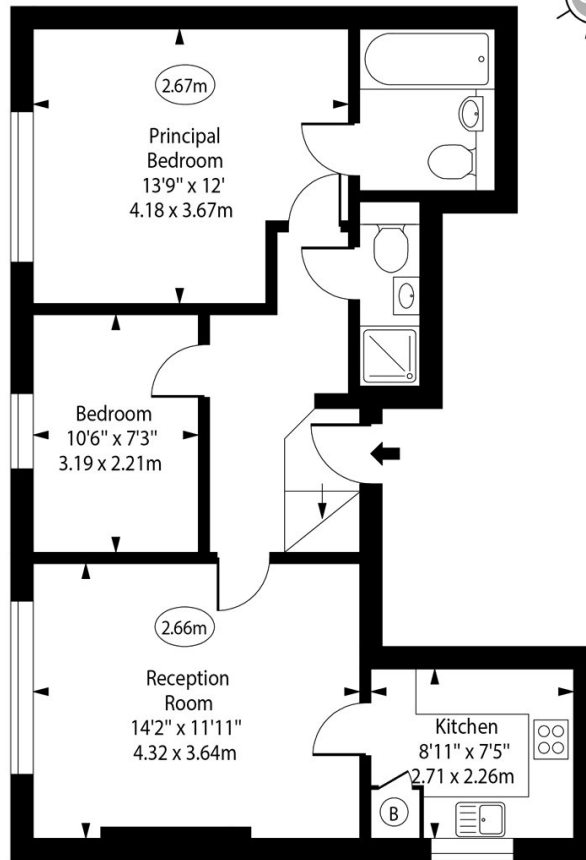
OAKHILL





Cleve Road,
South Hampstead, NW6

○ - Ceiling Height



Second Floor

Approx Gross Internal Area 640 Sq Ft - 59.46 Sq M

Every attempt has been made to ensure the accuracy of the floor plan shown. However, all measurements, fixtures, fittings, and data shown are approximate interpretations and for illustrative purposes only.

Measured according to the RICS IPMS 2. Not To Scale.

www.goldlens.co.uk

Ref. No. 028042J

Agents Note: Whilst every care has been taken to prepare these sales particulars, they are for guidance purposes only. All measurements are approximate are for general guidance purposes only and whilst every care has been taken to ensure their accuracy, they should not be relied upon and potential buyers are advised to recheck the measurements