



Court Close, St. Johns Wood Park, St Johns Wood, NW8

£2,495 per week + fees
Subject to contract

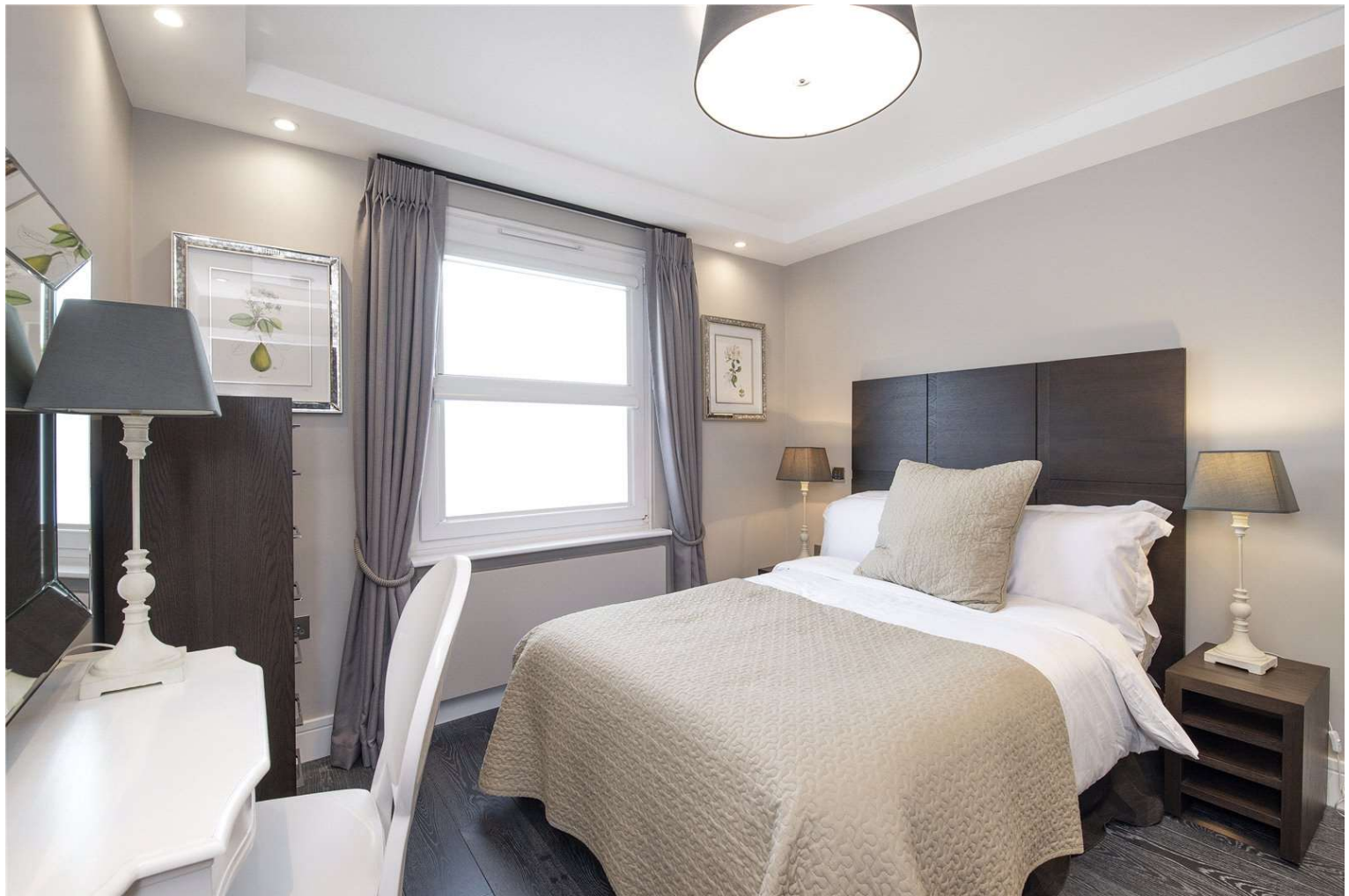
An immaculately presented four bedroom new build house conveniently located in the heart of St John's Wood, set within the ever popular gated development Boydell Court. Arranged over three floors and offering well-proportioned accommodation, this beautiful home offers a fantastic open plan kitchen / reception / dining area with a conservatory and French doors leading out to a picturesque decked garden with a separate studio room. Principle bedroom with a walk in dressing room, en-suite bathroom and direct access to a private terrace, three further double bedrooms each with fitted wardrobes, a family bathroom and separate shower room.

Further benefiting from, a study, air-conditioning, underfloor heating and 24hr concierge. Parking is on a first come, first serve basis, with a further option to rent a space by separate negotiation. St Johns Wood Park is located within easy reach of the amenities and transport links of Swiss Cottage and St John's Wood (Jubilee line).

Available now on a furnished or unfurnished basis.

- Four/Five Bedrooms
- Four Bathrooms
- Spacious open plan kitchen/reception
- Conservatory
- Study
- Garden
- Studio
- Guest WC
- Communal Gardens
- 24 Hour Concierge
- Unreserved Off Street Parking
- Available now

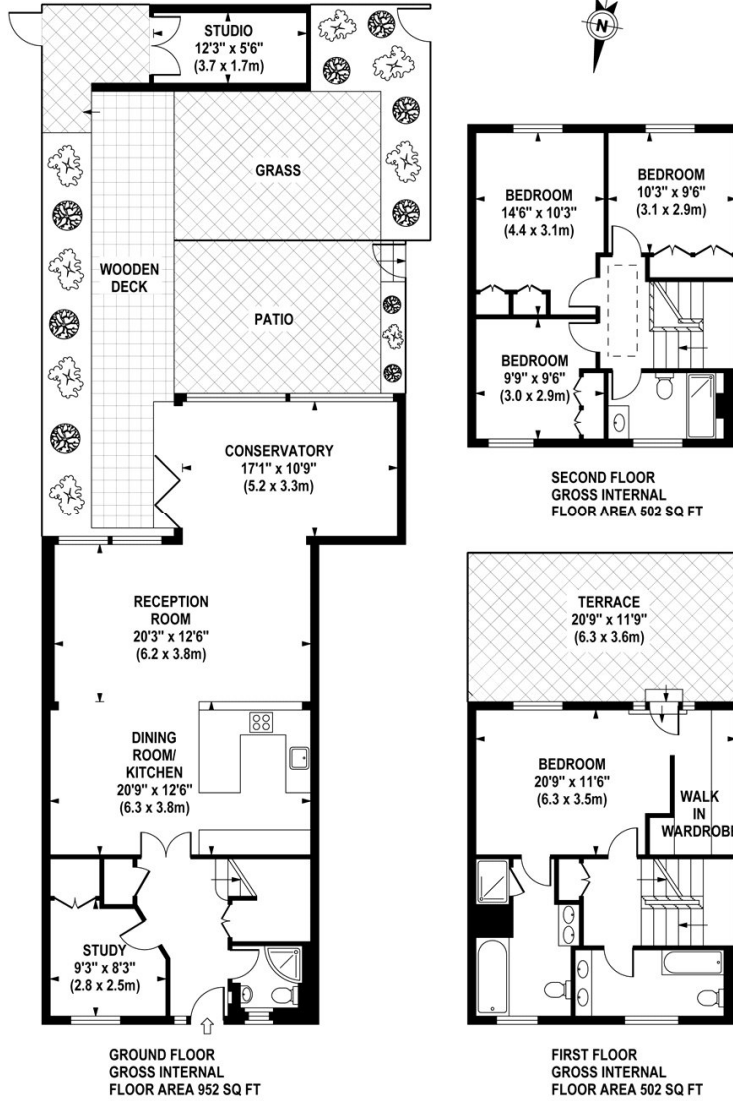




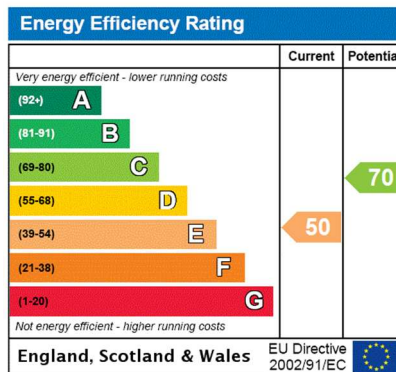
COURT HOUSE

Approximate Gross Internal Area 2024 sq ft / 188.0 sq m
(Including Studio)

Approximate Gross Internal Area 1956 sq ft / 181.7 sq m
(Excluding Studio)



Although every attempt has been made to ensure accuracy, all measurements are approximate.
The floor plan's for illustrative purposes only and not to scale. Measured in accordance to RICS standards.
DE-PHOTOGRAPHY.NET



Agents Note: Whilst every care has been taken to prepare these sales particulars, they are for guidance purposes only. All measurements are approximate are for general guidance purposes only and whilst every care has been taken to ensure their accuracy, they should not be relied upon and potential buyers are advised to recheck the measurements