



OAKHILL



FOR SALE
£879,500
SUBJECT TO CONTRACT

Highbridge Close

RADLETT HERTFORDSHIRE WD7 7GW

KEY FEATURES

- END OF TERRACE
- FAMILY HOME
- FOUR BEDROOMS
- THREE BATHROOMS
- SOUTH FACING GARDEN
- BALCONY
- FREEHOLD

An exceptional four bedroom end of terrace family home situated over three floors, with a south facing private garden and superbly positioned within a gated development. This wonderful house offers well-proportioned accommodation throughout, including a triple aspect reception room, a separate kitchen / dining room, master bedroom with en suite bathroom and balcony, three further bedrooms, each with fitted wardrobes and three additional bathrooms (two with en-suite bathrooms). The property is a short walk to Radlett Thameslink train station along with the upmarket parade of shops in Radlett village.



OAKHILL





OAKHILL





OAKHILL



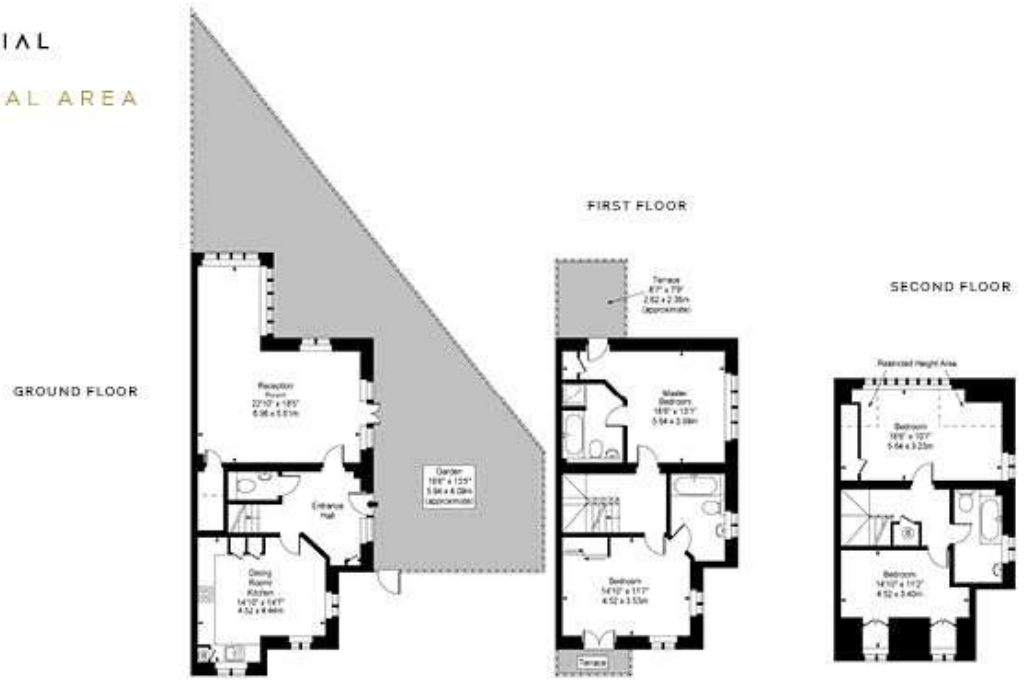


OAKHILL



OAKHILL RESIDENTIAL

APPROX GROSS INTERNAL AREA
1766 SQ FT - 164SQM



HIGHBRIDGE CLOSE, RADLETT, HERTFORDSHIRE, WD7

This floorplan is for illustrative purposes only and is not to scale.

Agents Note: Whilst every care has been taken to prepare these sales particulars, they are for guidance purposes only. All measurements are approximate and are for general guidance purposes only and whilst every care has been taken to ensure their accuracy, they should not be relied upon and potential buyers are advised to recheck the measurements