



OAKHILL



FOR SALE
£550,000
SUBJECT TO CONTRACT

Heathway Court

KEY FEATURES

- Two bedrooms
- One bathroom
- Porter
- Communal gardens
- Off street parking on a first come first serve basis
- Leasehold

FINCHLEY ROAD HAMPSTEAD NW3 7TS

A beautifully presented ground floor two bedroom apartment set within a portered purpose built mansion block. The property has been recently refurbished throughout and boasts a great size reception room with high ceilings and lots of light, stylish kitchen with integrated appliances, two spacious double bedrooms, master with fitted wardrobes and a modern family bathroom. Further benefiting from off Street parking on a first come first serve basis and communal gardens.

Heathway Court is superbly located within close proximity to Hampstead Heath, Hampstead village, along with the excellent transport links.

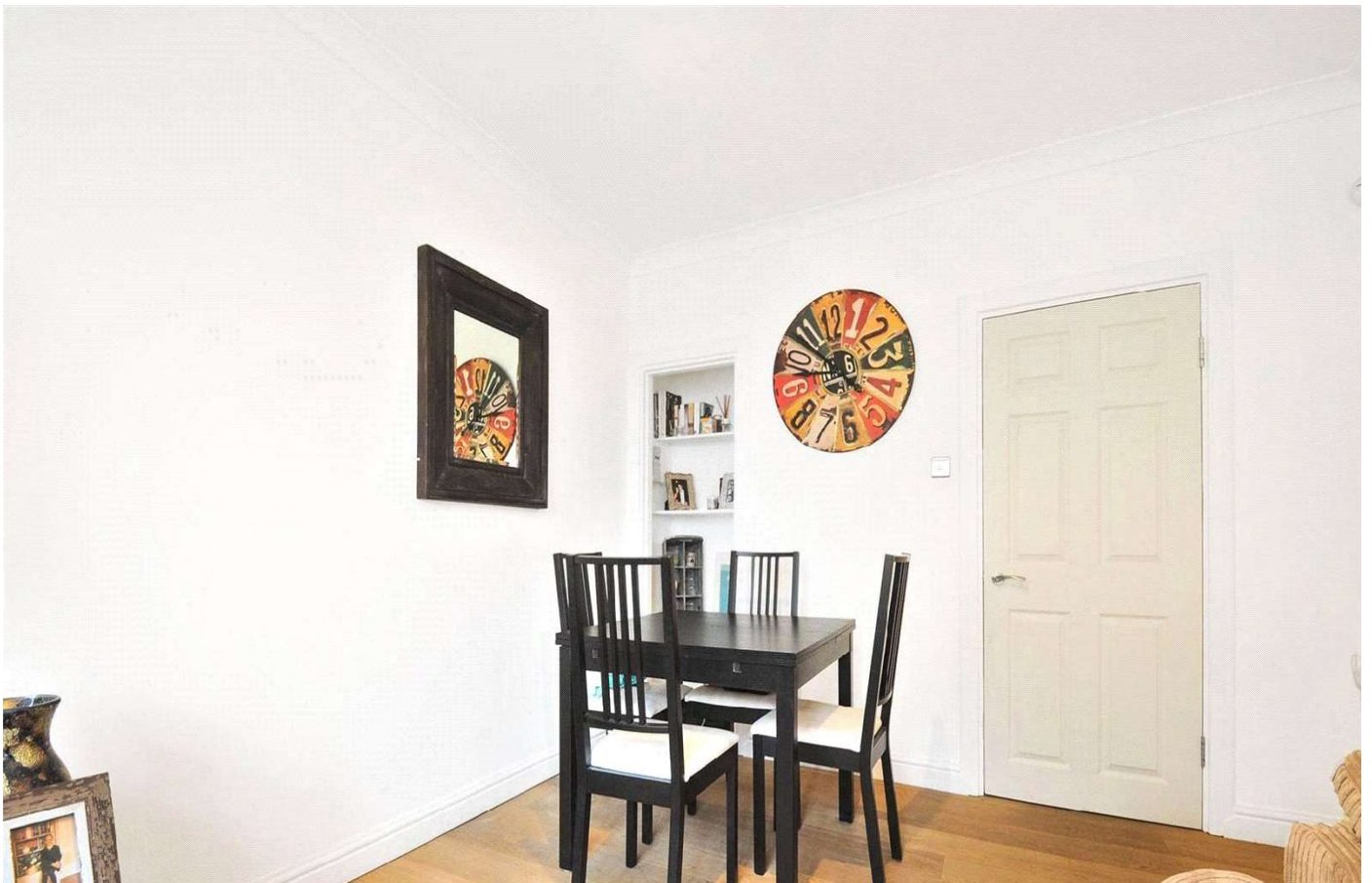


OAKHILL



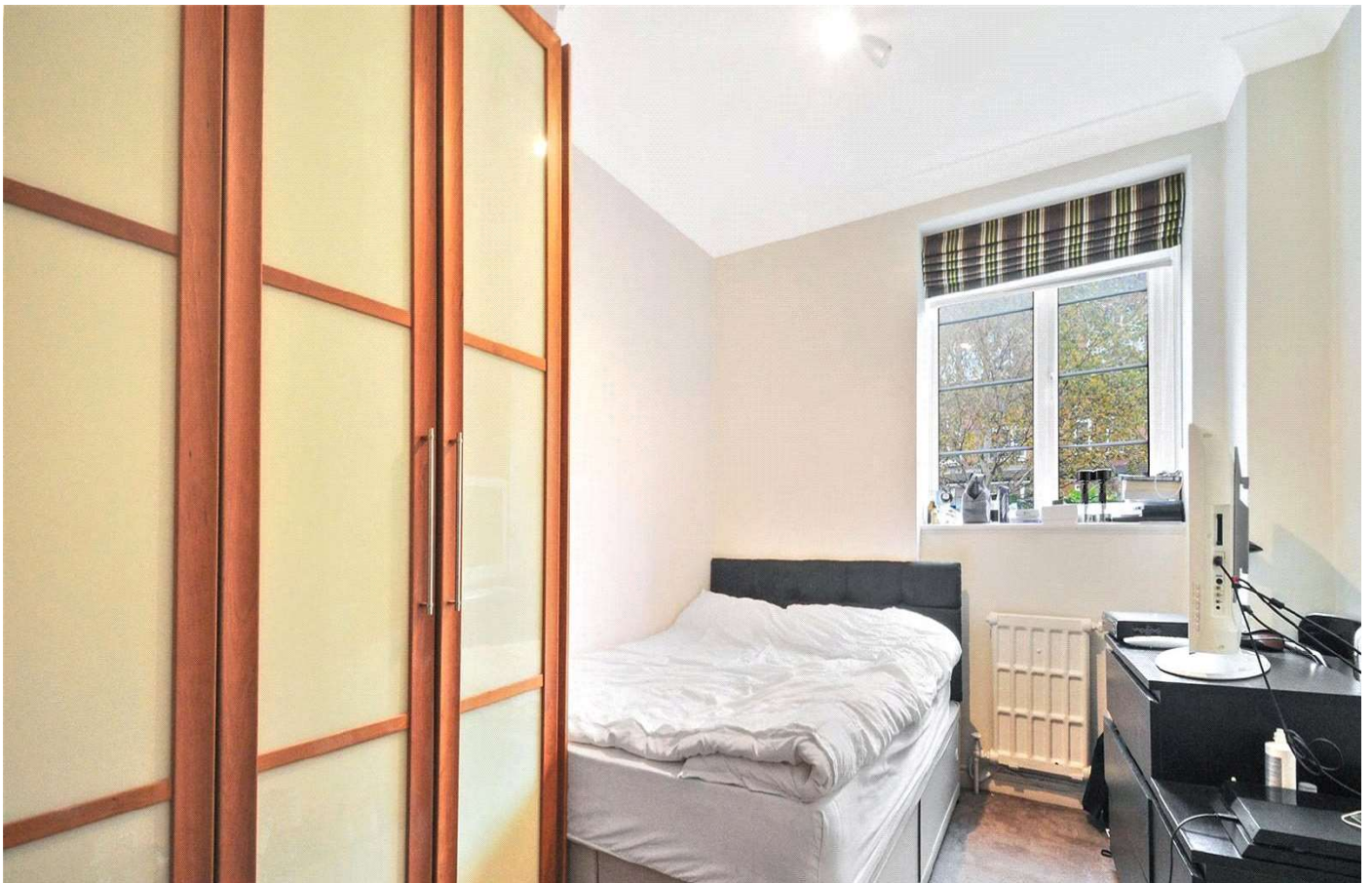


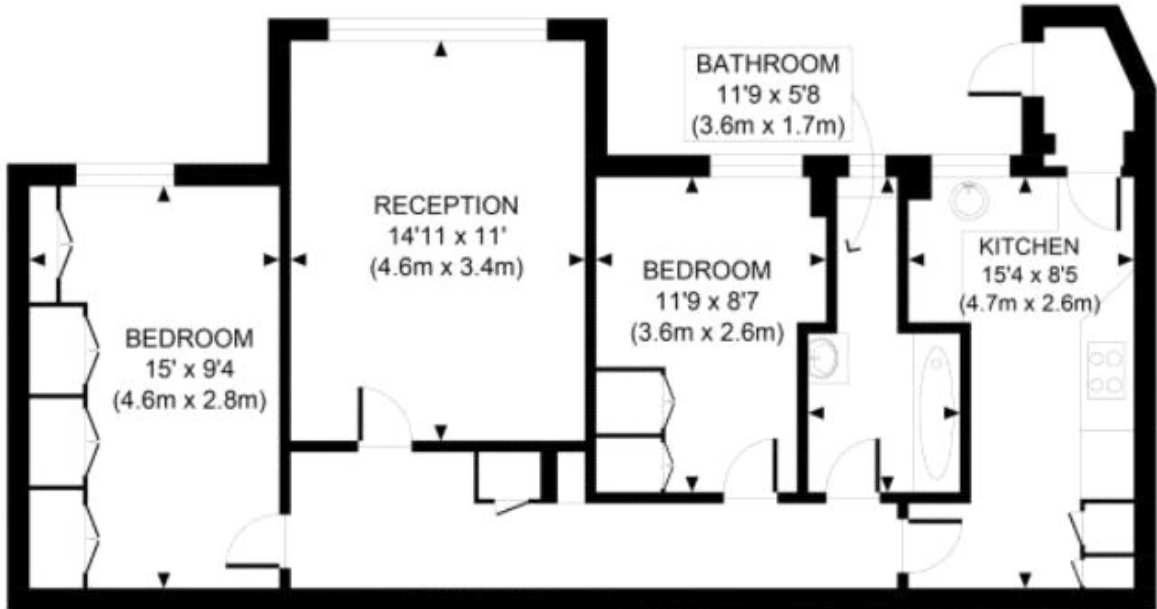
OAKHILL





OAKHILL





GROSS INTERNAL FLOOR AREA 703 SQ FT

APPROX. GROSS INTERNAL FLOOR AREA 703 SQ FT / 65 SQM

Energy Efficiency Rating		
	Current	Potential
Very energy efficient - lower running costs		
(92+) A		
(81-91) B		
(69-80) C	69	71
(55-68) D		
(39-54) E		
(21-38) F		
(1-20) G		
Not energy efficient - higher running costs		
England, Scotland & Wales	EU Directive 2002/91/EC	

Agents Note: Whilst every care has been taken to prepare these sales particulars, they are for guidance purposes only. All measurements are approximate and are for general guidance purposes only and whilst every care has been taken to ensure their accuracy, they should not be relied upon and potential buyers are advised to recheck the measurements