



FOR SALE  
£695,000  
SUBJECT TO CONTRACT

## Madoc Close

### KEY FEATURES

- Penthouse Apartment
- Two Bedrooms
- Two Bathrooms
- Private Terrace
- Under Floor Heating
- Share of Freehold

### LONDON NW2 2BG

A fantastic two bedroom, two bathroom penthouse apartment, with a private terrace and off street parking, set within the luxurious and gated Tudor House development. This beautifully designed apartment, which offers well-proportioned accommodation, features a bright and spacious Poggenpohl kitchen/dining/living room with Miele appliances and access to the terrace, principal bedroom with built in wardrobes, an en-suite bathroom and also benefits from access to the terrace, second bedroom with fitted wardrobes and a family shower room. Tudor House is superbly located within close proximity to Hampstead Heath, Hampstead village, along with the excellent transport links.

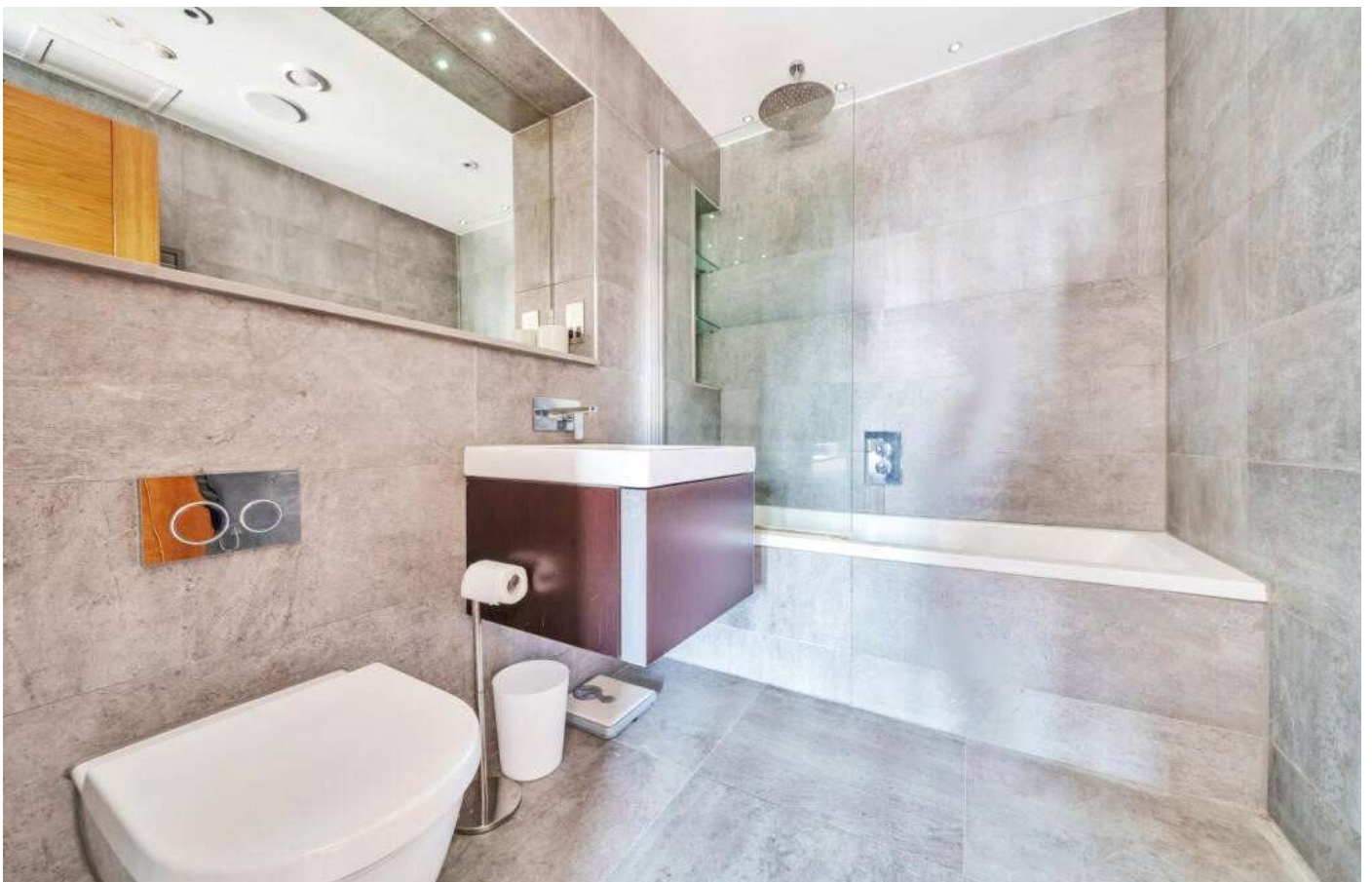


OAKHILL





OAKHILL





OAKHILL

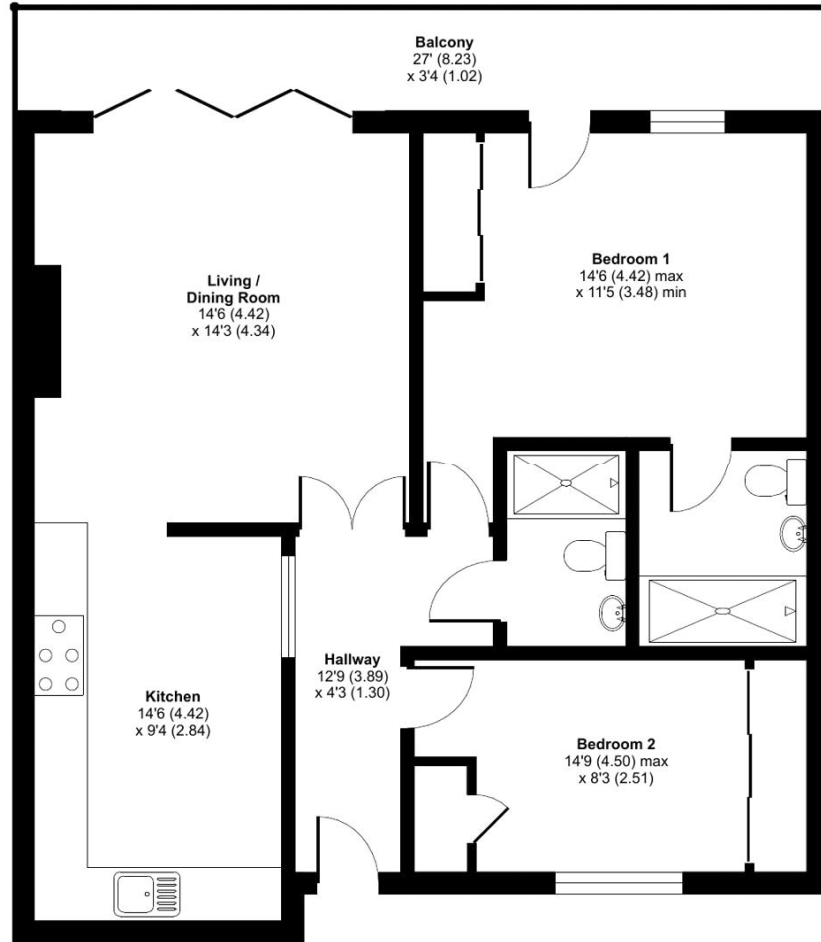




## Madoc Close, NW2

Approximate Area = 833 sq ft / 77.4 sq m

For identification only - Not to scale



SECOND FLOOR



Floor plan produced in accordance with RICS Property Measurement Standards incorporating International Property Measurement Standards (IPMS2 Residential). © nichecom 2023. Produced for Benham & Reeves. REF: 993904

*Agents Note: Whilst every care has been taken to prepare these sales particulars, they are for guidance purposes only. All measurements are approximate and are for general guidance purposes only and whilst every care has been taken to ensure their accuracy, they should not be relied upon and potential buyers are advised to recheck the measurements*