



TO LET
£600 PER WEEK
SUBJECT TO CONTRACT

Finchley Road

LONDON NW2 2PL

KEY FEATURES

- 2/3 bedrooms
- Spacious living room
- Large kitchen
- Family Bathroom
- Balcony
- Over 1000 sqft

An impressive 2/3-bedroom apartment set within this well-maintained residence, enviably positioned in the heart of Childs Hill. The apartment boasts high ceilings and large windows throughout, featuring a superb reception / dining room with doors leading out onto a private balcony and large bay windows letting in plenty of natural light. There is a separate fully fitted kitchen/breakfast room, family bathroom, large principal bedroom, a second double bedroom with plenty of storage and a third room which is perfect for a study or nursery. Not suitable for sharers.

Moreland Court is superbly positioned for local transport links at Golders Green , Finchley Road and West Hampstead and convenient access to many fashionable cafes and local amenities of Finchley Road and West End Lane.

Available now on an unfurnished basis



OAKHILL





OAKHILL

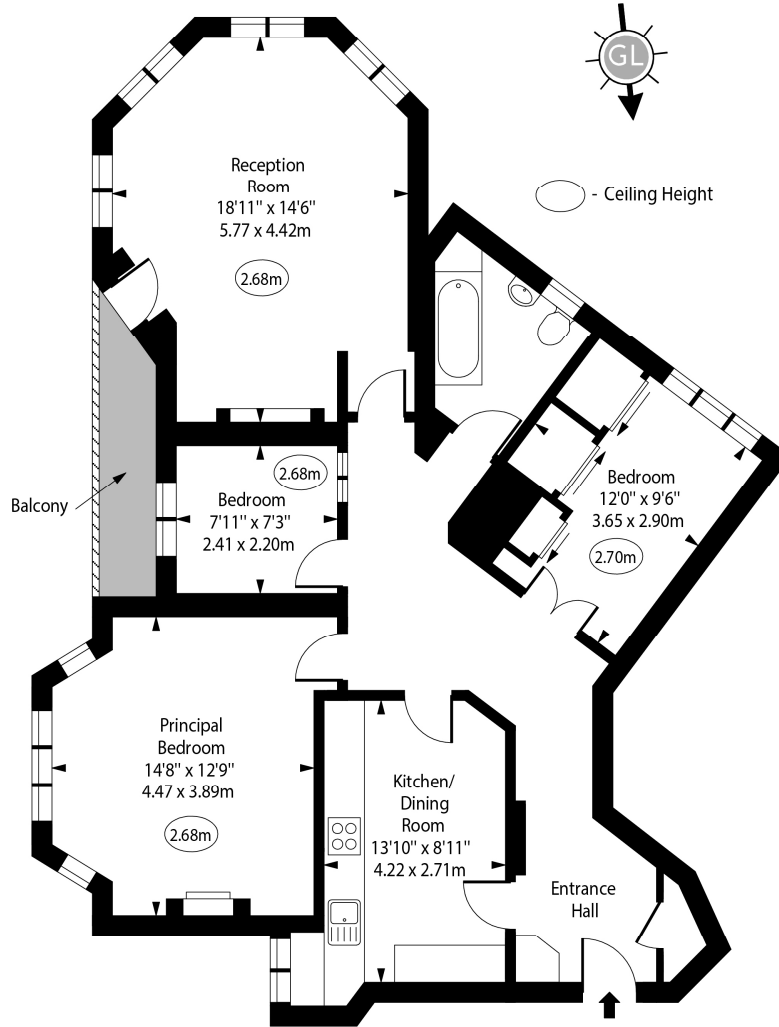




OAKHILL




Moreland Court,
Finchley Road, NW2



Second Floor

Approx Gross Internal Area 1020 Sq Ft - 94.76 Sq M

For Illustration Purposes Only - Not To Scale
www.goldlens.co.uk
Ref. No. 022043R

Energy Efficiency Rating		Current	Potential
Very energy efficient - lower running costs			
(92+)	A		
(81-91)	B		
(69-80)	C		77
(55-68)	D	68	
(39-54)	E		
(21-38)	F		
(1-20)	G		
Not energy efficient - higher running costs			
England, Scotland & Wales		EU Directive 2002/91/EC	

Agents Note: Whilst every care has been taken to prepare these sales particulars, they are for guidance purposes only. All measurements are approximate are for general guidance purposes only and whilst every care has been taken to ensure their accuracy, they should not be relied upon and potential buyers are advised to recheck the measurements