

Canterbury House, Canterbury Road, Kilburn, London, NW6

£465 per week + fees
Subject to contract

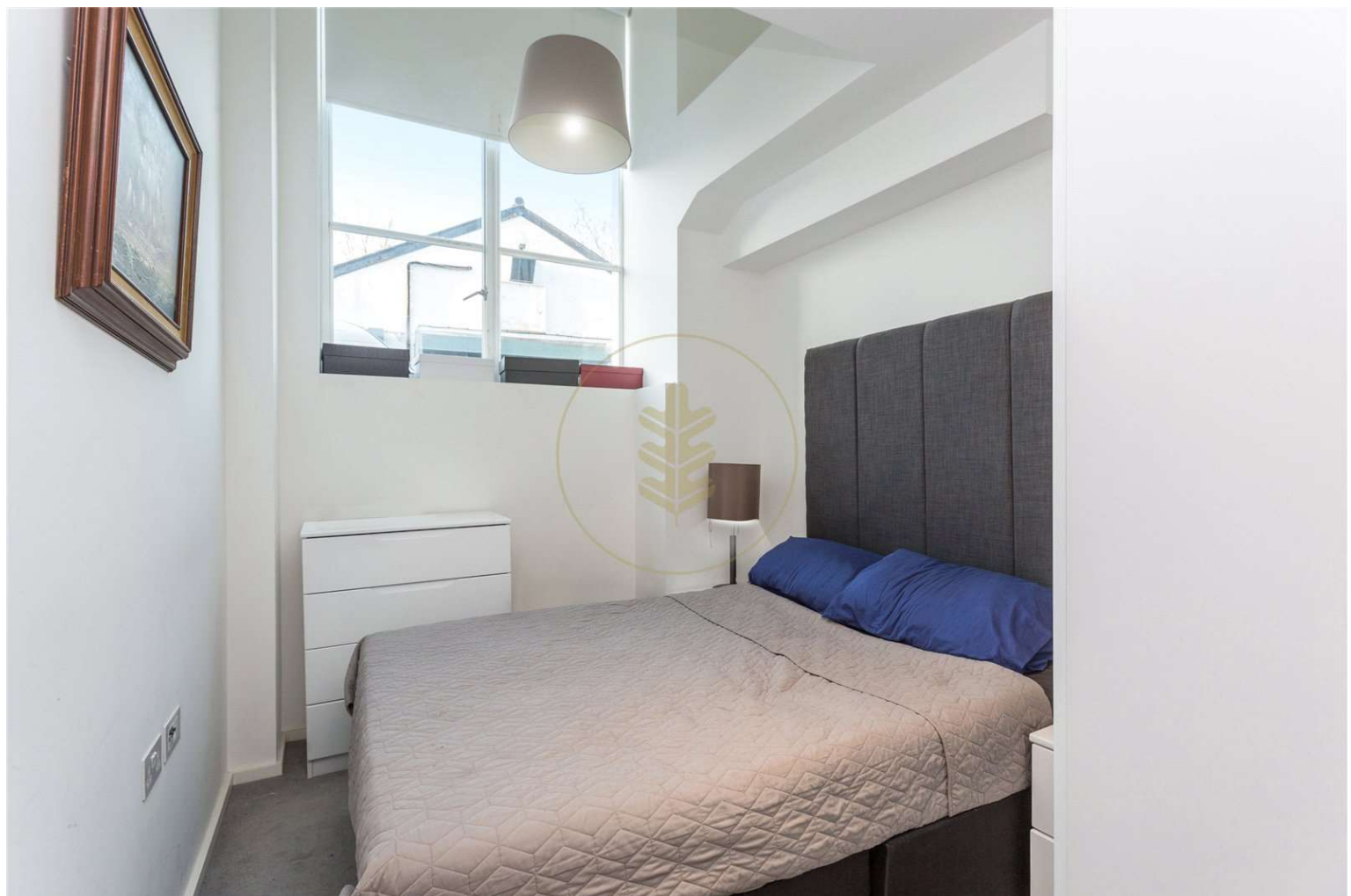
This magnificent two bedroom duplex apartment is situated on the ground and first floors of this luxurious contemporary warehouse conversion. The property boasts exceptional natural light throughout with its oversized windows, an open plan fully fitted kitchen / reception room, a bedroom and shower room on the ground floor and a master bedroom with an en-suite bathroom on the first floor. The apartment has been finished to the highest standard throughout. Further benefiting from access to the gym on the lower ground floor.

Canterbury lofts is ideally located in Kilburn for access to a range of excellent amenities - including shops, bars and bistros with Queens Park being only a short walk away. Canterbury House is located within in a short walk to Kilburn Park Underground Station.

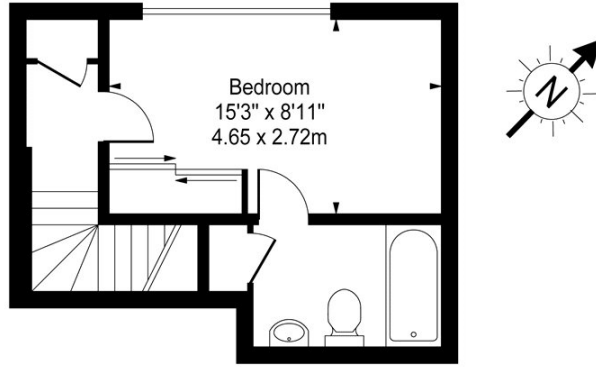
The property is available on 23rd December on a furnished basis

- Duplex Apartment
- Two bedrooms
- One-en-suite bathroom
- Shower room
- Open plan kitchen reception room
- Available 23rd December

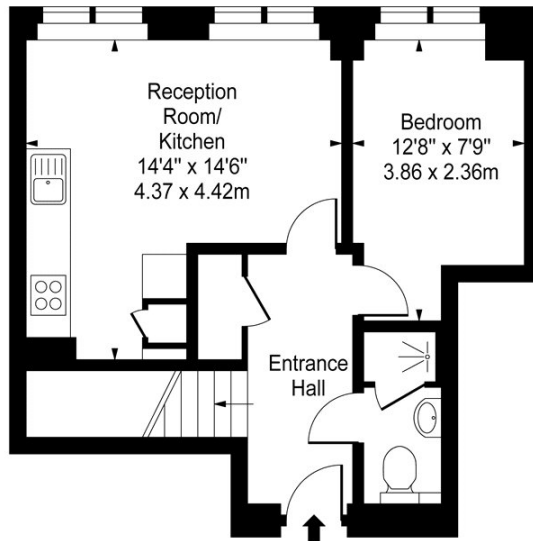




**Canterbury House,
Canterbury Road,
Kilburn, NW6 5FR**



Mezzanine



Ground Floor

Approx Gross Internal Area **653 Sq Ft - 60.66 Sq M**

For Illustration Purposes Only - Not To Scale

www.goldlens.co.uk

Ref. No. 008970Ga

Energy Efficiency Rating		Current	Potential
Very energy efficient - lower running costs			
(92+)	A		
(81-91)	B		
(69-80)	C	78	78
(55-68)	D		
(39-54)	E		
(21-38)	F		
(1-20)	G		
Not energy efficient - higher running costs			
England, Scotland & Wales		EU Directive 2002/91/EC	

Agents Note: Whilst every care has been taken to prepare these sales particulars, they are for guidance purposes only. All measurements are approximate are for general guidance purposes only and whilst every care has been taken to ensure their accuracy, they should not be relied upon and potential buyers are advised to recheck the measurements