



FOR SALE
£599,950
SUBJECT TO CONTRACT

KEY FEATURES

- AshfordWorks
- Brand New Gated Development
- Two bedroom Apartment
- Ground Floor
- Two Bathrooms
- Private Garden
- Share Of Freehold

Ashford Road

CRICKLEWOOD LONDON NW2 6TP

'AshfordWorks' A superb, cool and quirky brand new gated development of 5 luxury two bedroom houses and 2 luxury two bedroom apartments, each offering flexible and stylish bespoke specification of the highest quality, along with a private courtyard and communal garden.

This ground floor two bedroom apartment offers well-proportioned living accommodation including a large open plan kitchen / living room with access to a private garden, principal bedroom with an ensuite bathroom and also access to the garden, second bedroom and family bathroom.

Ashford Road is directly off Cricklewood Broadway, sandwiched between West Hampstead, Willesden and Brondesbury Park. Cricklewood station is within Zone 3 of the London rail network, and is less than a 5 minute walk away and is served by Thameslink rail services.

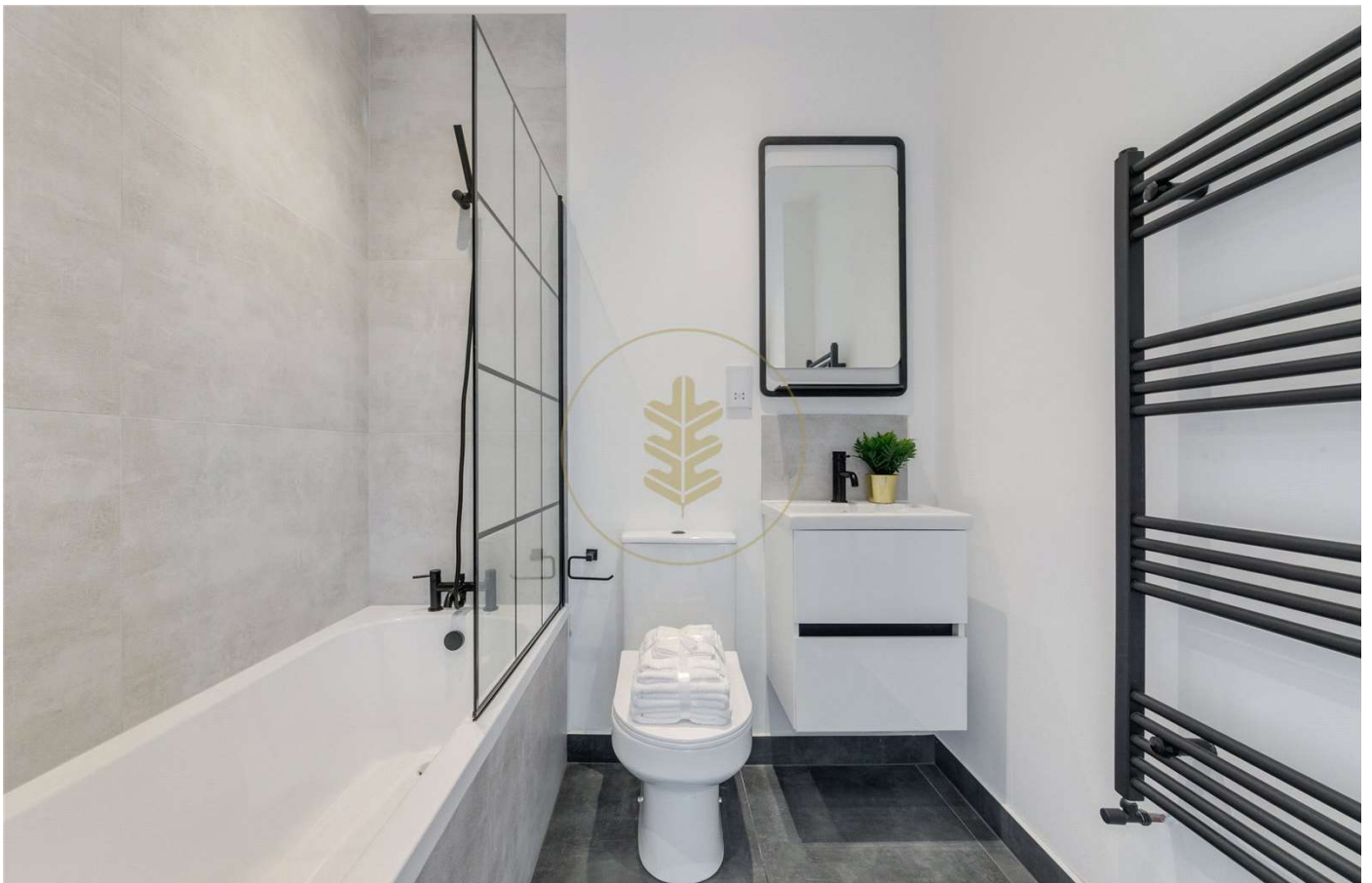


OAKHILL





OAKHILL





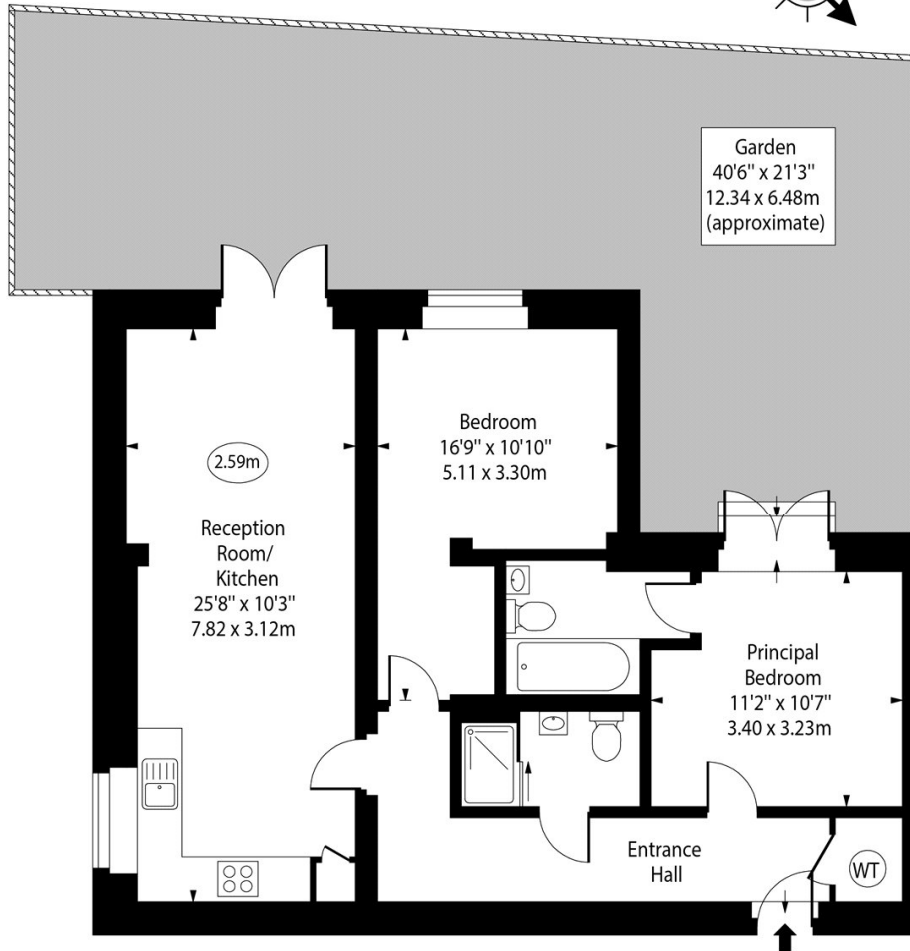
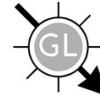
OAKHILL





Ashford Road, NW2

○ - Ceiling Height



Ground Floor

Approx Gross Internal Area 758 Sq Ft - 70.42 Sq M

For Illustration Purposes Only - Not To Scale
www.goldlens.co.uk
Ref. No. 019495.1K

Agents Note: Whilst every care has been taken to prepare these sales particulars, they are for guidance purposes only. All measurements are approximate are for general guidance purposes only and whilst every care has been taken to ensure their accuracy, they should not be relied upon and potential buyers are advised to recheck the measurements