



UNDER OFFER
£575,000
SUBJECT TO CONTRACT

Hope Close

KEY FEATURES

- Two Bedrooms
- Two Bathrooms
- Open Plan Kitchen/Reception Room
- Balcony
- First Floor
- 920 Square Feet
- Landscaped Gardens
- Underground Parking

HENDON LONDON NW4 1AY

Situated in this fantastic new build development is this beautifully interior designed two bedroom, two bathroom first floor (with a lift) apartment offering flexible and stylish bespoke specification of the highest quality throughout. Featuring a fantastic open plan kitchen living room with patio doors leading out onto a large balcony overlooking well landscaped communal gardens, principal bedroom with fitted wardrobes and an en-suite shower room, second bedroom with fitted wardrobes, utility room and a family bathroom. Furthermore, the flat benefits from underfloor heating throughout, a video entry system and gated underground parking for one car. The residents also have use of a shuttle bus to/from Hendon Central Station on weekdays. Chain free.

Hope Close is conveniently located to Hendon and Mill Hill high streets, offering excellent leisure facilities, parks and woodlands being just a short walk to the green spaces of Sunny Hill Park with Hendon Central tube station taking you into Central London in 20 minutes.



OAKHILL





OAKHILL

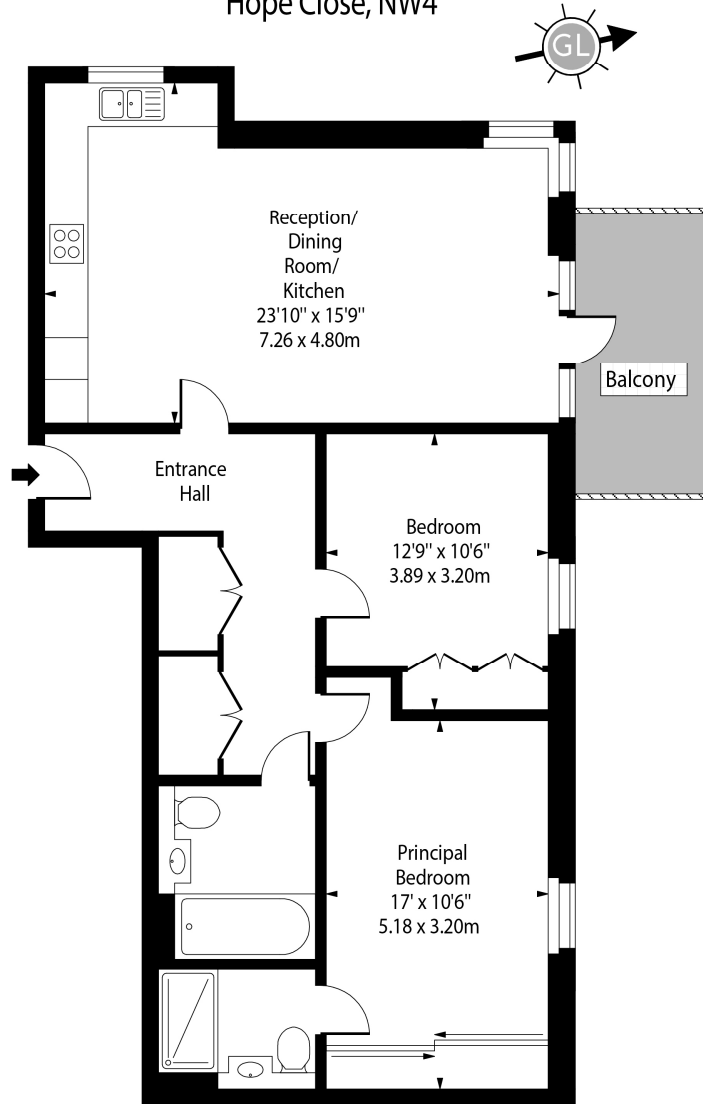




OAKHILL




Albion Court,
Hope Close, NW4



First Floor

Approx Gross Internal Area 920 Sq Ft - 85.47 Sq M

For Illustration Purposes Only - Not To Scale

Energy Efficiency Rating		
	Current	Potential
Very energy efficient - lower running costs		
(92+) A		
(81-91) B	85	85
(69-80) C		
(55-68) D		
(39-54) E		
(21-38) F		
(1-20) G		
Not energy efficient - higher running costs		
England, Scotland & Wales	EU Directive 2002/91/EC	

Agents Note: Whilst every care has been taken to prepare these sales particulars, they are for guidance purposes only. All measurements are approximate and are for general guidance purposes only and whilst every care has been taken to ensure their accuracy, they should not be relied upon and potential buyers are advised to recheck the measurements