



TO LET
£425 PER WEEK
SUBJECT TO CONTRACT

KEY FEATURES

- One bedroom
- Spacious reception room
- Kitchen
- Shower room
- Off street parking
- Private patio

Mountfield Road

FINCHLEY N3 3ND

A charming one bedroom garden apartment set within an imposing Victorian conversion. (with its own entrance.) Benefiting from a spacious reception room with a large bay window, bringing in floods of natural light and a separate galley kitchen. Furthermore the apartment benefits from a great sized bedroom with fitted wardrobes, a shower room and the added bonus of your own private patio garden. Furthermore there is a shared drive for one car.

Mountfield Road is conveniently located a short walk away to Temple Fortune as well as being within easy reach of Finchley Central which is on the Northern Line.

Available 10th August on a part furnished basis.



OAKHILL



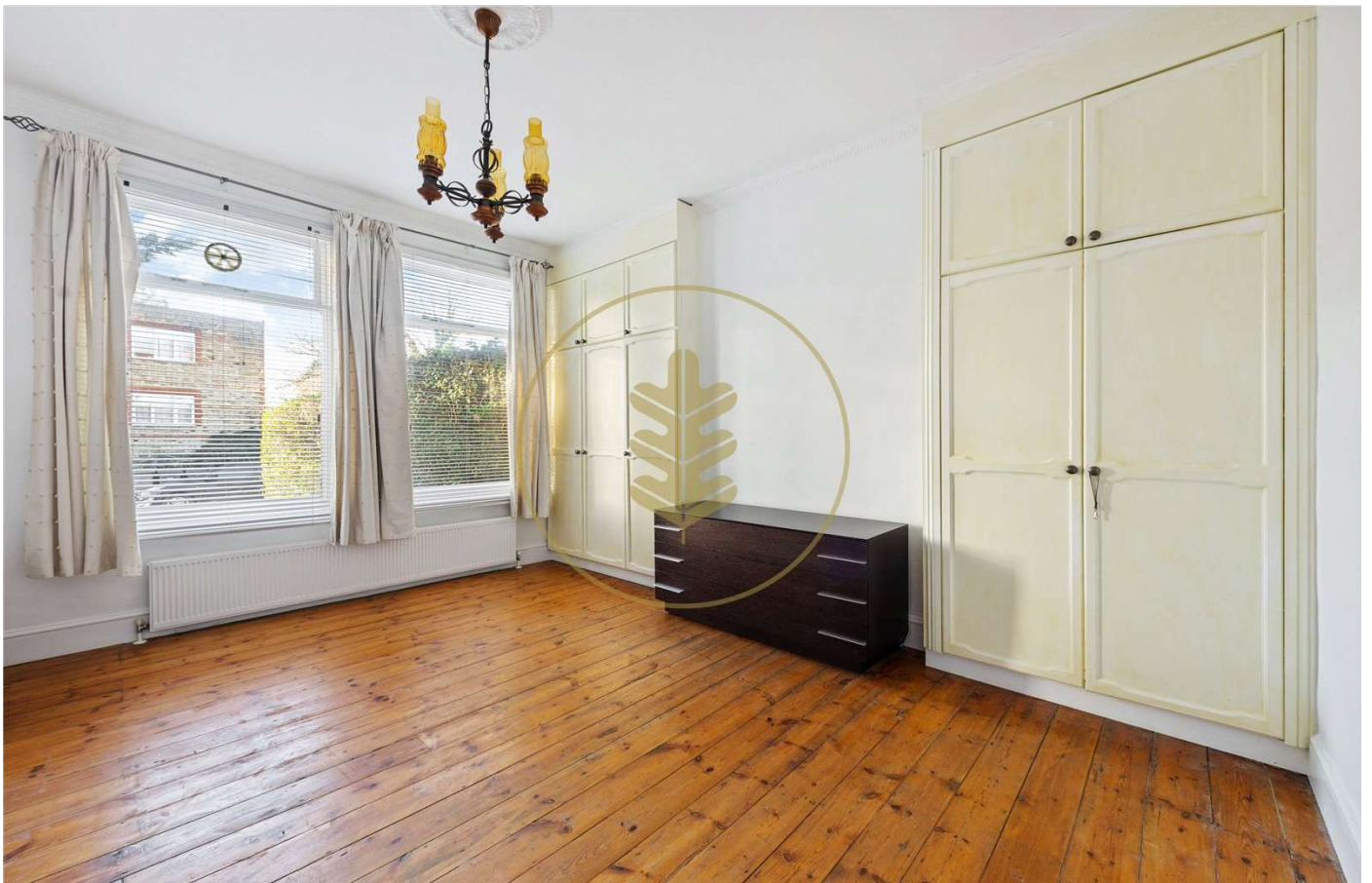


OAKHILL

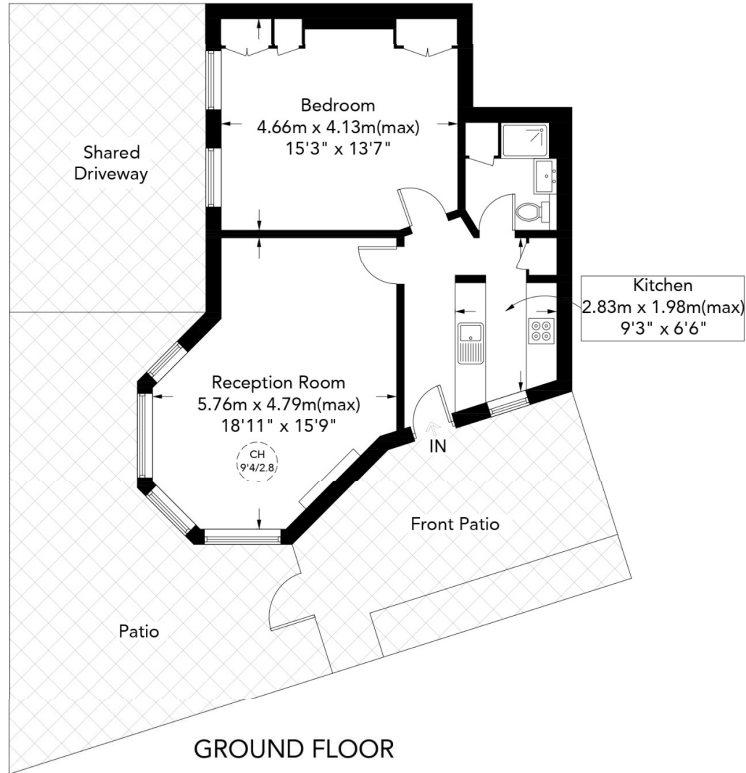




OAKHILL




APPROXIMATE GROSS INTERNAL AREA
609 SQ FT - 56.6 SQ M



MOUNTFIELD ROAD, N3

This plan is for layout guidance only. Not drawn to scale unless stated. Windows and door openings are approximate. Whilst every care is taken in the preparation of this plan, please check all dimensions, shapes and compass bearings before making any decisions reliant upon them.

Energy Efficiency Rating		
	Current	Potential
Very energy efficient - lower running costs		
(92+) A		
(81-91) B		
(69-80) C		
(55-68) D		
(39-54) E		
(21-38) F		
(1-20) G		
Not energy efficient - higher running costs		
England, Scotland & Wales	EU Directive 2002/91/EC	

Current	Potential
58	74

Agents Note: Whilst every care has been taken to prepare these sales particulars, they are for guidance purposes only. All measurements are approximate are for general guidance purposes only and whilst every care has been taken to ensure their accuracy, they should not be relied upon and potential buyers are advised to recheck the measurements