



Woodcroft Apartments, Silverworks Close, London, NW9

£475,000

Subject to contract

A ground floor two-bedroom apartment with direct access to a private 30 ft garden and off-street parking. The property features a 29ft open plan kitchen, living room with modern fitted appliances and access to the garden, two good sized bedrooms (one having direct access to the garden), family bathroom and ample storage throughout.

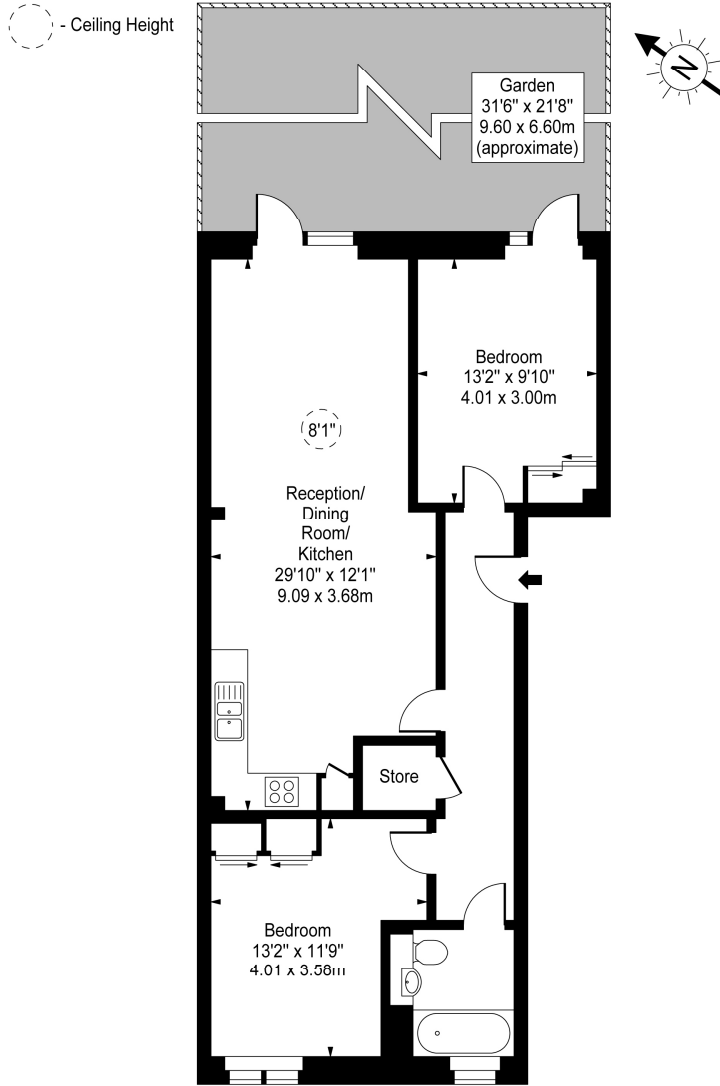
This apartment is finished to a high specification and is part of the larger Silverworks development in Colindale located off the Edgware Road just 0.5 mile from Colindale tube station with numerous road links close by including the M1 and the A41 Whilst also being close to local amenities.

- Two Bedroom
- Two Bathroom
- New Development
- Off Street Parking
- New build





Woodcroft Building, NW9 0DW



Ground Floor

Approx Gross Internal Area **785 Sq Ft - 72.93 Sq M**

For Illustration Purposes Only - Not To Scale
www.goldlens.co.uk
Ref. No. 010785J

Agents Note: Whilst every care has been taken to prepare these sales particulars, they are for guidance purposes only. All measurements are approximate are for general guidance purposes only and whilst every care has been taken to ensure their accuracy, they should not be relied upon and potential buyers are advised to recheck the measurements