



FOR SALE
£850,000
SUBJECT TO CONTRACT

Brondesbury Road

KEY FEATURES

- New Development
- 1, 2 & 3 Bedroom Apartments
- Stylish Bespoke Specification
- Period Residence
- Located In The Heart Of Queens Park
- Share Of Freehold

QUEENS PARK LONDON NW6 6SB

A superb development of five luxury 1, 2 and 3 bedroom apartments, each offering flexible and stylish bespoke specification of the highest quality, set within this period residence in the heart of Queens Park.

This two bedroom split level apartment offers 863 sqft of well proportioned accommodation featuring a beautiful open plan kitchen / reception room with an abundance of light, two good size bedrooms, a family bathroom and separate guest WC.

Brondesbury Road is located within easy reach of the shops, restaurants and bars of the Salisbury Road as well as the green open spaces of Queen's Park. Local transport links include Queen's Park (Bakerloo line & London Overground), Brondesbury (London Overground) and Kilburn (Jubilee line).



OAKHILL





OAKHILL





OAKHILL





5

two bedroom apartment

KITCHEN / LIVING

5.2 x 7.9 m 17'1" x 26'

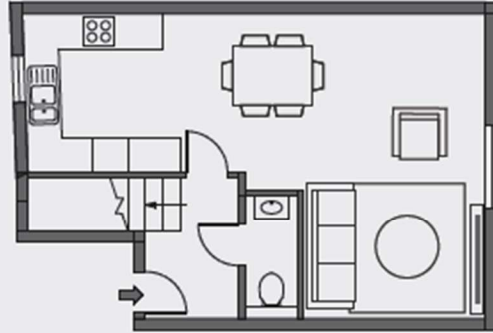
BEDROOM 1

3.9 x 3.3 m 12'9" x 10'9"

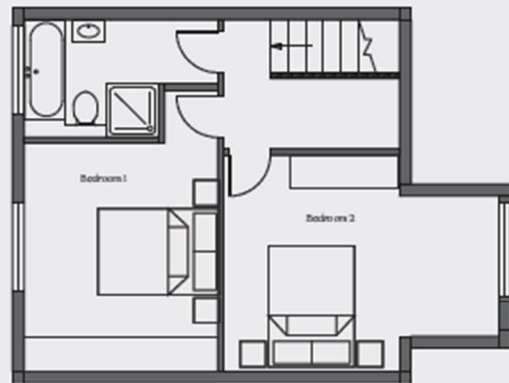
BEDROOM 2

3.7 x 4.7 m 12'3" x 15'6"

TOTAL AREA 80.2 m² / 863 ft²



Second Floor Level



Third Floor Level

Agents Note: Whilst every care has been taken to prepare these sales particulars, they are for guidance purposes only. All measurements are approximate and are for general guidance purposes only and whilst every care has been taken to ensure their accuracy, they should not be relied upon and potential buyers are advised to recheck the measurements