



TO LET
£1,295 PER WEEK
SUBJECT TO CONTRACT

Aberdare Gardens

SOUTH HAMPSTEAD LONDON NW6 3QD

KEY FEATURES

- Newly refurbished garden apartment
- Three bedrooms
- Two bathrooms
- Reception room
- Kitchen/breakfast room
- Basement storage
- Garden
- Unfurnished
- Off street parking for one car

An extremely impressive 2476 sq ft three bedroom garden apartment set within this well maintained residence, enviably positioned in one of South Hampstead's most sought after locations. This beautifully refurbished apartment boasts high ceilings and large windows throughout, featuring a superb south facing reception / dining room with patio doors leading out onto a wonderful garden and a separate fully fitted kitchen/breakfast room. Furthermore the principle bedroom benefits from a large bay window and an en-suite shower room. Two further double bedroom and a family bathroom. There is a separate basement area with ample storage and there is off street parking for one car. Aberdare Gardens is superbly positioned for local transport links at West Hampstead and Finchley Road, with convenient access to many fashionable cafes and local amenities of Finchley Road and West End Lane.

Available now on an unfurnished basis



OAKHILL





OAKHILL





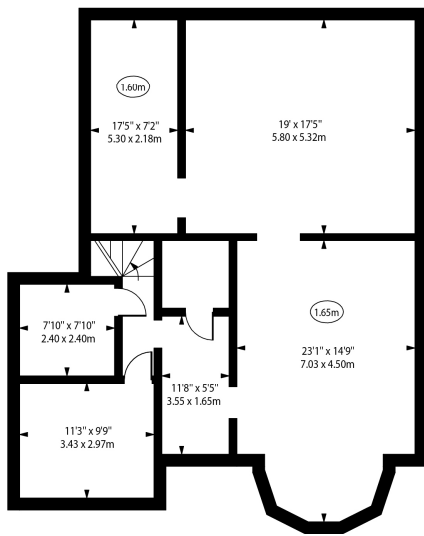
OAKHILL



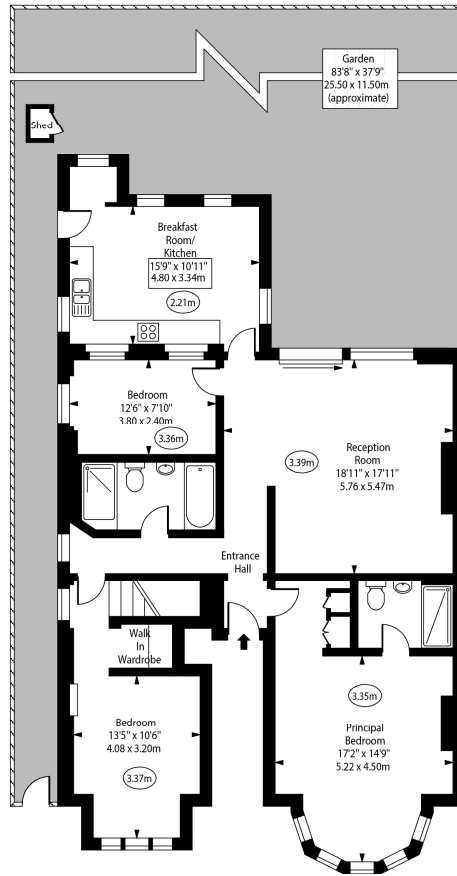
Aberdare Gardens, NW6



○ - Ceiling Height



Basement



Ground Floor

Approx Gross Internal Area 2476 Sq Ft - 230.02 Sq M

For Illustration Purposes Only - Not To Scale
 www.goldlens.co.uk
 Ref. No. 018344R

Energy Efficiency Rating		
	Current	Potential
Very energy efficient - lower running costs		
(92+) A		
(81-91) B		
(69-80) C		75
(55-68) D	57	
(39-54) E		
(21-38) F		
(1-20) G		
Not energy efficient - higher running costs		
England, Scotland & Wales	EU Directive 2002/91/EC	

Agents Note: Whilst every care has been taken to prepare these sales particulars, they are for guidance purposes only. All measurements are approximate are for general guidance purposes only and whilst every care has been taken to ensure their accuracy, they should not be relied upon and potential buyers are advised to recheck the measurements