



OAKHILL



Asking Price

£650,000

SUBJECT TO CONTRACT

The Vabel // Haverstock

KEY FEATURES

- Vabel Haverstock
- One Bedroom
- First Floor
- Balcony
- Engineered Wooden Flooring
- Zonal Underfloor Heating
- Communal Roof Terrace
- Superb Location

HAVERSTOCK HILL LONDON NW3 2BL

Vabel Haverstock - A selection of 29 new design-led apartments set in a prime location on Haverstock Hill.

Enter bright, spacious and highly functional homes, designed for the flow of modern life. The generous proportions of the open-plan kitchens and living rooms create a luxurious space, with atmospheric fittings throughout, engineered wooden flooring and zonal underfloor heating. The principal bedrooms feature Vabel's signature master suite with an ensuite and walk-in wardrobes. Many apartments feature a balcony, marrying the modern luxury of the home with the extraordinary views beyond it.

On the fourth floor, a communal terrace which provides an open space to sit and read or to savour the exceptional panoramic views over London.

Vabel Haverstock sits opposite Chalk Farm tube station, minutes from Camden and a seven minute stroll from the upmarket restaurants, bars and boutiques of leafy Primrose Hill with Regent's Park beyond.



OAKHILL





OAKHILL





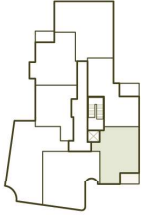
OAKHILL





Apartment No. 04

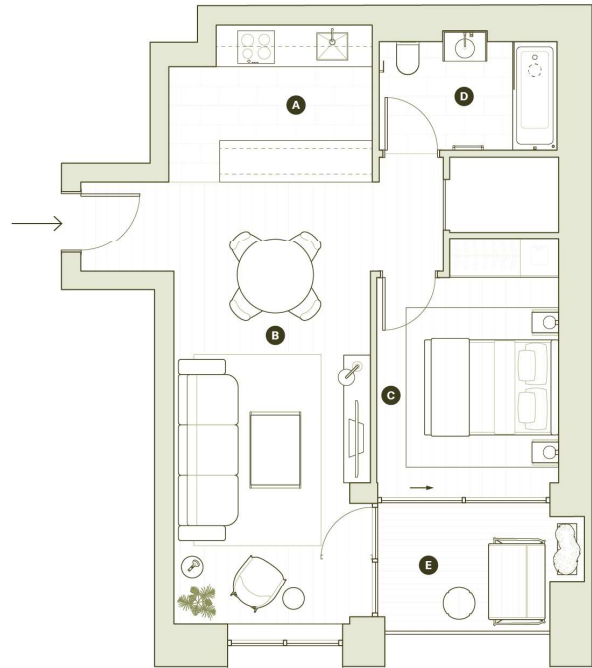


BEDROOMS	FLOOR	KEY PLAN
01	01	

INTERNAL
52.7 m² / 567.3 ft²

EXTERNAL
6.0 m² / 64.6 ft²

	METRES	FEET
A Kitchen	3.2 × 2.5	10.5 × 8.1
B Reception & Dining	7.0 × 3.1	22.9 × 10.1
C Bedroom	4.1 × 2.9	13.4 × 9.4
D Bathroom	2.8 × 1.7	9.2 × 5.6
E Balcony	3.3 × 2.0	10.7 × 6.6



Room dimensions are to be carefully considered prior to purchase of furniture and must not be used for the purchase of flooring or window treatment. All measurements are approximate and may vary within a tolerance of 5%.

Agents Note: Whilst every care has been taken to prepare these sales particulars, they are for guidance purposes only. All measurements are approximate and are for general guidance purposes only and whilst every care has been taken to ensure their accuracy, they should not be relied upon and potential buyers are advised to recheck the measurements