

West End Lane, West Hampstead, London, NW6

£530 per week
Subject to contract

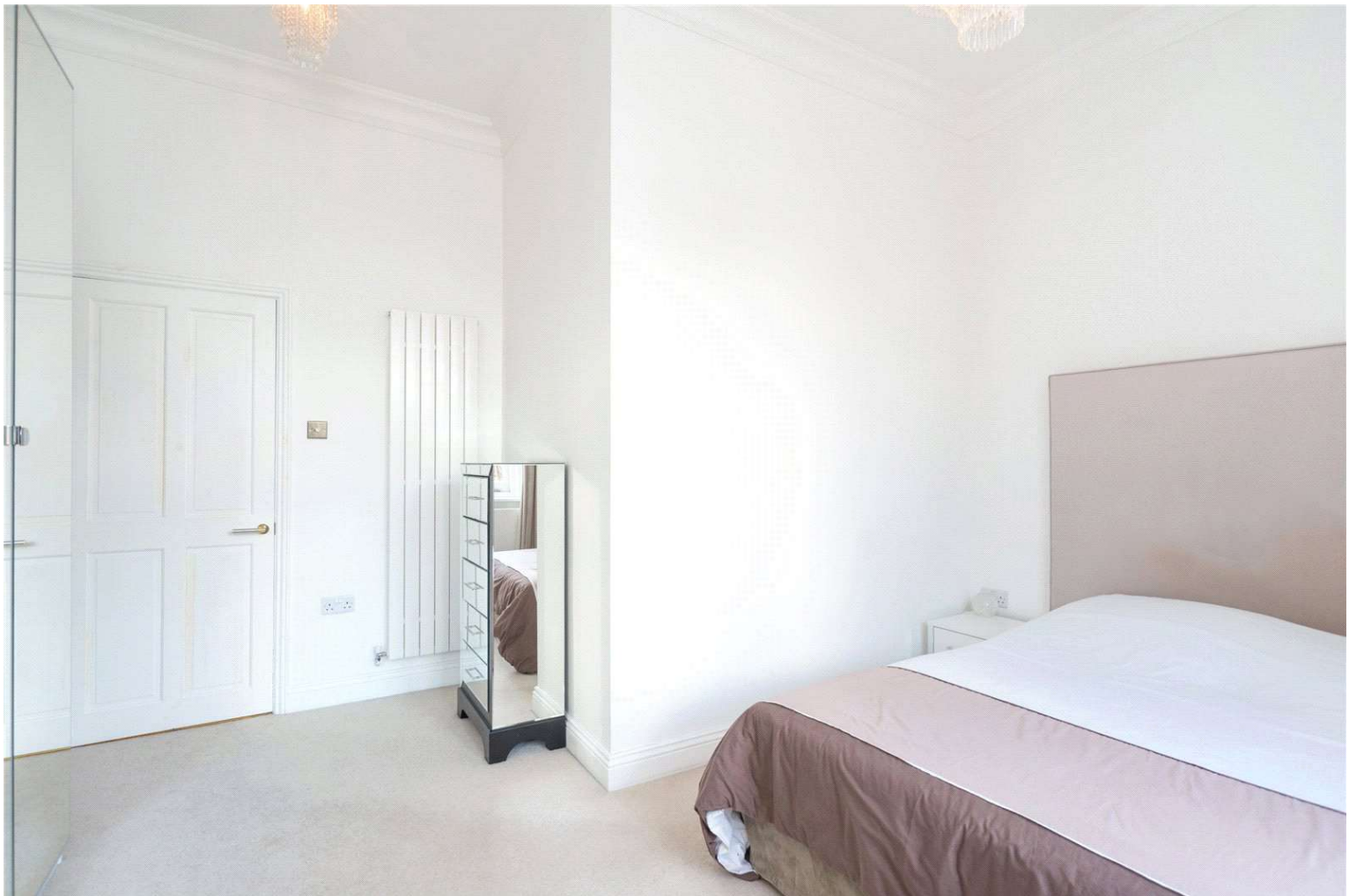
A stylish and well-presented first floor two bedroom apartment set within this handsome period residence with access to communal gardens. The apartment benefits from high ceilings throughout and offers a fantastic open plan kitchen / reception room, two good sized bedrooms, dressing room and a family bathroom.

Positioned superbly on West End Lane, with the Jubilee Line, London Overground and Thameslink Stations within a short walk. Nearby coffee shops, bars, restaurants and the popular weekly farmers market can also be found close by.

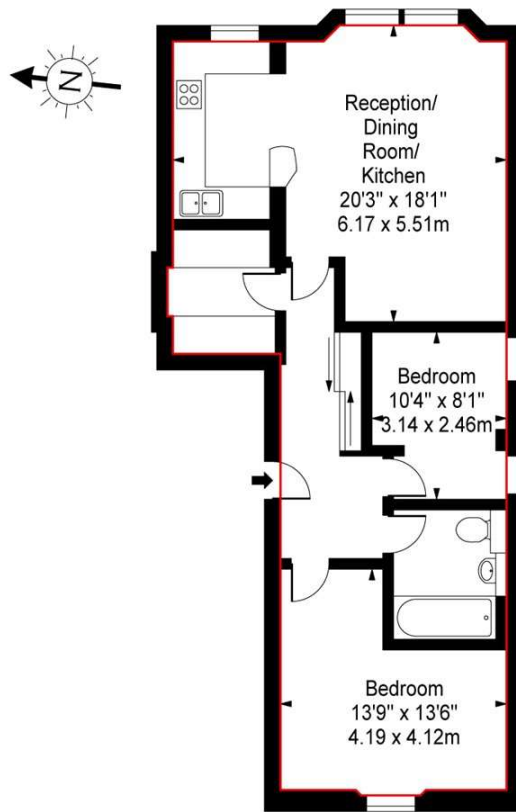
Available 11th April on a furnished or part furnished basis

- Two Bedrooms
- Period Residence
- Communal Gardens
- Superb Location
- Available 11th April
- Furnished or part furnished





West End Lane, NW6



First Floor

Approximate Square Footage Within Red Line **764 Sq Ft - 70.97 Sq M**

For Illustration Purposes Only - Not To Scale Floor Plan by www.epixandplans.com Ref: No.36379

This floor plan should be used as a general outline for guidance only. Any intending purchaser or lessee should satisfy themselves by inspection, searches, enquiries and full survey as to the correctness of each statement. Any areas, measurements or distances quoted are approximate and should not be used to value a property or be the basis of any sale or let.

Energy Efficiency Rating		Current	Potential
Very energy efficient - lower running costs			
(92+)	A		
(81-91)	B		
(69-80)	C		79
(55-68)	D	55	
(39-54)	E		
(21-38)	F		
(1-20)	G		
Not energy efficient - higher running costs			
England, Scotland & Wales		EU Directive 2002/91/EC	

Agents Note: Whilst every care has been taken to prepare these sales particulars, they are for guidance purposes only. All measurements are approximate and for general guidance purposes only and whilst every care has been taken to ensure their accuracy, they should not be relied upon and potential buyers are advised to recheck the measurements