

## Cambridge Gardens, Kilburn Park, London, NW6

£795,000

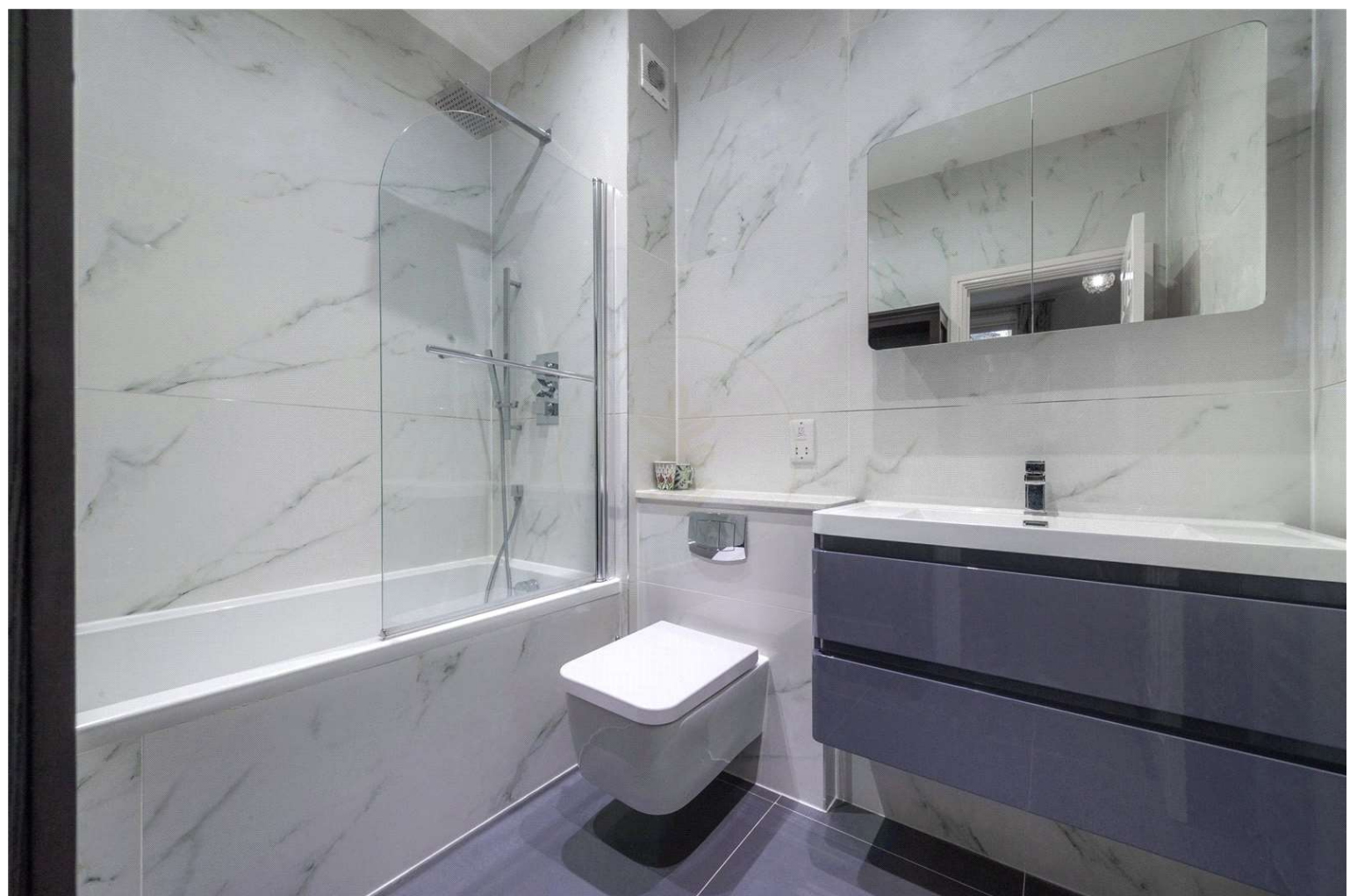
Subject to contract

A stylish two double bedroom garden apartment situated in an imposing period residence accessed via a private entrance. This beautiful apartment which has been finished to an exquisite standard is approximately 840 sq ft, offering well-proportioned accommodation throughout, including a contemporary eat in kitchen/dining/living room, principal bedroom with en-suite bathroom, second bedroom and a separate shower room.

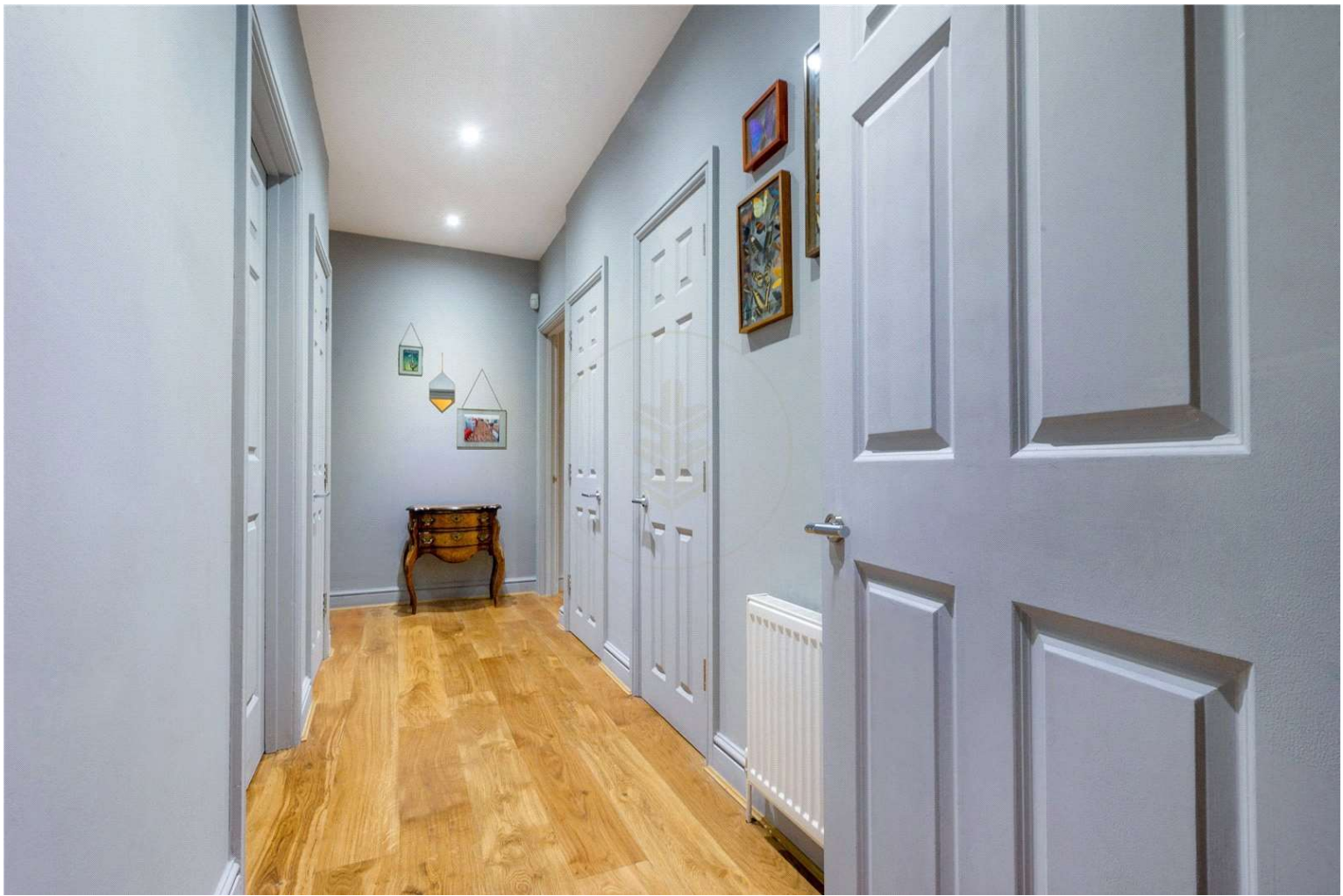
Cambridge Gardens is superbly positioned for the local transport links of Kilburn Park and is within convenient access to many fashionable cafes and local amenities of St Johns Wood and Maida Vale.

- Stylish Garden Apartment
- Own Private Entrance
- Two Double Bedrooms
- Private garden
- Private Entrance
- Good Condition
- Superb Location

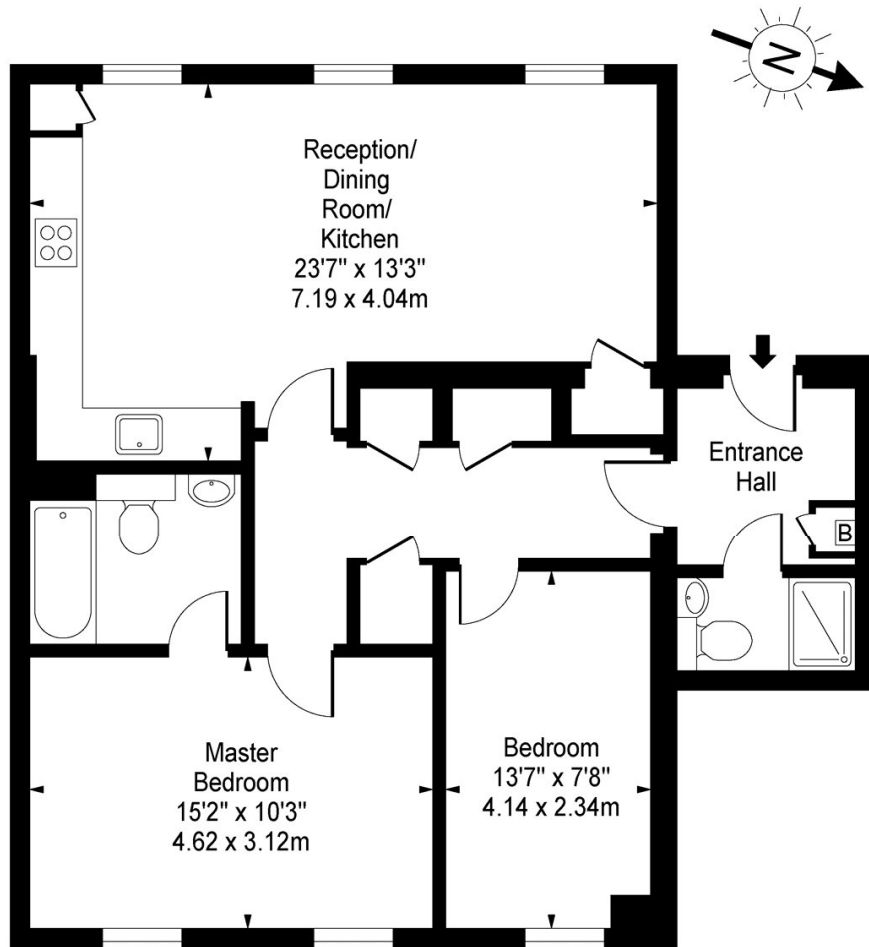








**Cambridge Gardens,  
North Maida Vale, NW6**



Lower Ground Floor

**Approx Gross Internal Area    840 Sq Ft - 78.04 Sq M**

For Illustration Purposes Only - Not To Scale

[www.goldlens.co.uk](http://www.goldlens.co.uk)

Ref. No. 004645M

Agents Note: Whilst every care has been taken to prepare these sales particulars, they are for guidance purposes only. All measurements are approximate are for general guidance purposes only and whilst every care has been taken to ensure their accuracy, they should not be relied upon and potential buyers are advised to recheck the measurements