

Dennington Park Road, NW6

£495 per week
Subject to contract

A beautifully finished two bedroom garden apartment situated in this well maintained period residence a moments' walk from West End Lane. The apartment offers a stylish and bespoke specification throughout, including a spacious reception room with a large bay window bringing in floods of natural light, a charming kitchen with direct access to a beautiful private garden, two bedrooms and a separate family bathroom.

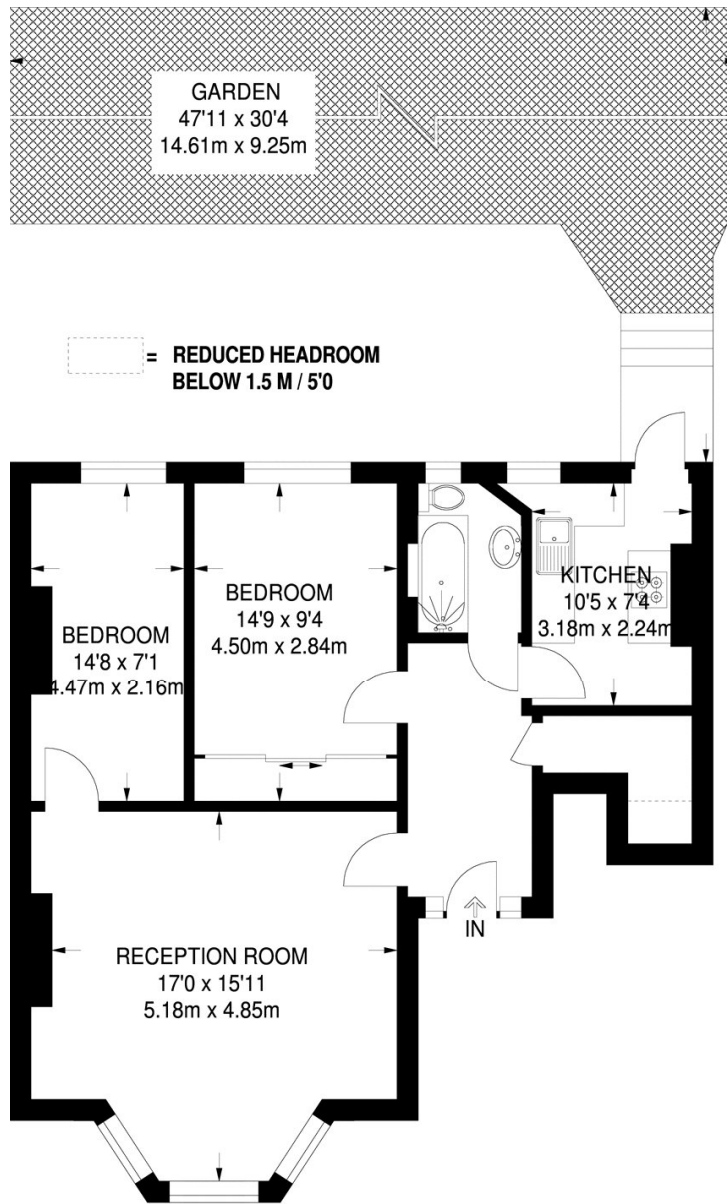
Dennington Park Road is superbly positioned in the heart of West Hampstead and close to all the amenities of West End Lane, West Hampstead Underground, Overground Stations (Jubilee Line & London Overground) and West Hampstead Thameslink Station.

Available 29th January on an unfurnished basis

- BEAUTIFUL TWO BEDROOM APARTMENT
- BRIGHT RECEPTION ROOM
- FAMILY BATHROOM
- DECKED GARDEN
- AVAILABLE 29TH JANUARY







**RAISED GROUND FLOOR
(EXCLUDING REDUCED HEADROOM)
737 SQ FT / 68.5 SQ M**

Energy Efficiency Rating		Current	Potential
Very energy efficient - lower running costs			
(92+)	A		
(81-91)	B		
(69-80)	C	77	83
(55-68)	D		
(39-54)	E		
(21-38)	F		
(1-20)	G		
Not energy efficient - higher running costs			
England, Scotland & Wales		EU Directive 2002/91/EC	

Agents Note: Whilst every care has been taken to prepare these sales particulars, they are for guidance purposes only. All measurements are approximate and for general guidance purposes only and whilst every care has been taken to ensure their accuracy, they should not be relied upon and potential buyers are advised to recheck the measurements