



FOR SALE
£2,295,000
SUBJECT TO CONTRACT

Frognal Rise

HAMPSTEAD LONDON NW3 6PZ

KEY FEATURES

- Exquisite Lateral Apartment
- Two Bedrooms
- Two Bathrooms
- 24 Hour Porterage
- Underground Parking
- Swimming Pool
- Gymnasium
- Hampstead Village

An exquisite lateral ground floor apartment (1245 sq ft/115.66 sm) with a private patio garden and secure underground parking space situated within a highly sought after luxury development with 24 hours porterage and landscaped grounds. This outstanding home features a large reception and dining room with doors leading to a private 51ft private patio and separate kitchen/breakfast room. The property boasts an indulgent principal bedroom with built in wardrobes and large en-suite bathroom, superb second bedroom with built in wardrobes, shower room, boiler/plant room and storage. Mount Vernon is considered one of Hampstead's finest secure development with 24 hour porterage, underground parking, swimming pool and gymnasium and superbly located in the very heart of the Village just moments away from fashionable boutiques, cafes and restaurants.



OAKHILL



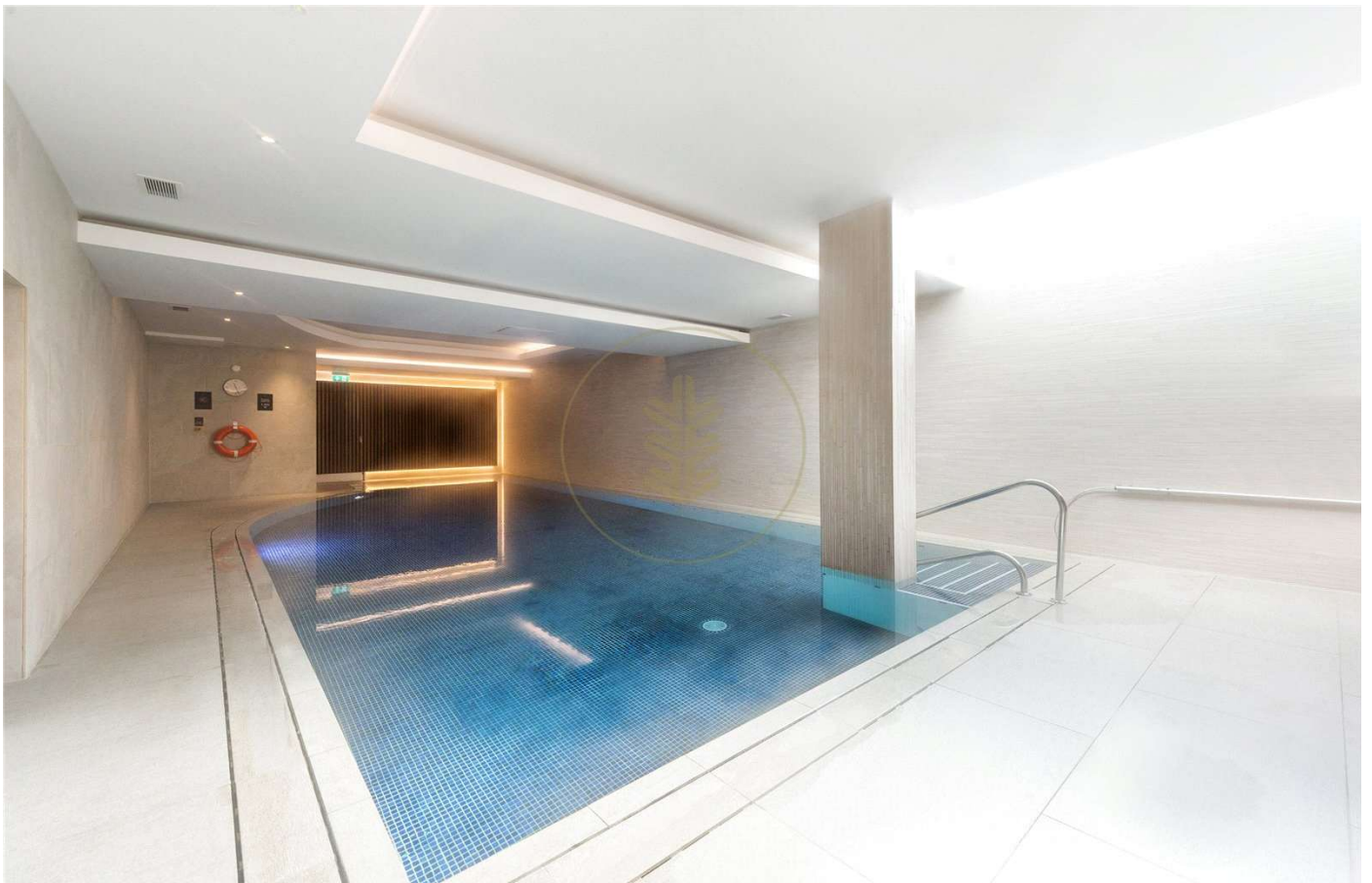


OAKHILL



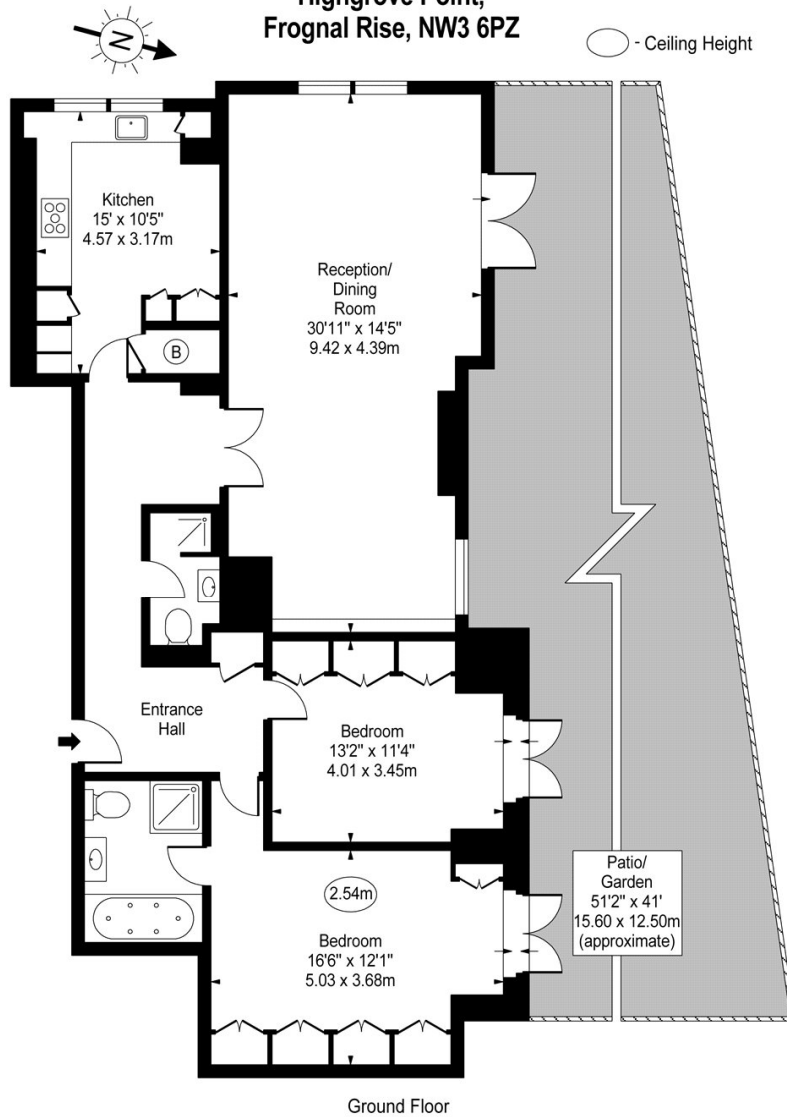


OAKHILL





**Highgrove Point,
Froggnal Rise, NW3 6PZ**



Ground Floor
Approx Gross Internal Area **1245 Sq Ft - 115.66 Sq M**
For Illustration Purposes Only - Not To Scale
www.goldlens.co.uk
Ref. No. 016162E

Agents Note: Whilst every care has been taken to prepare these sales particulars, they are for guidance purposes only. All measurements are approximate are for general guidance purposes only and whilst every care has been taken to ensure their accuracy, they should not be relied upon and potential buyers are advised to recheck the measurements