

## Loveridge Mews, West Hampstead, London, NW6

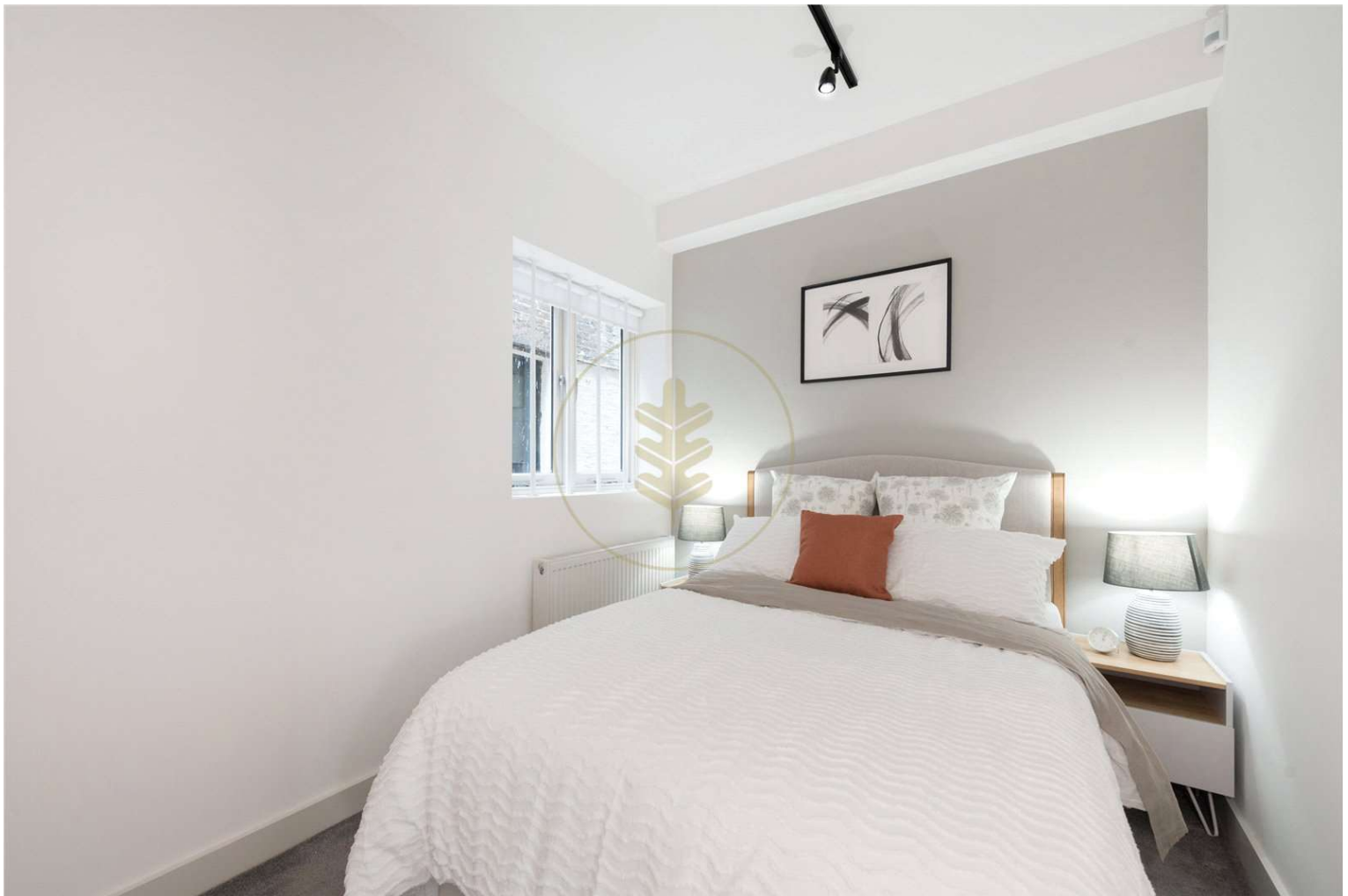
£475,000

Subject to contract

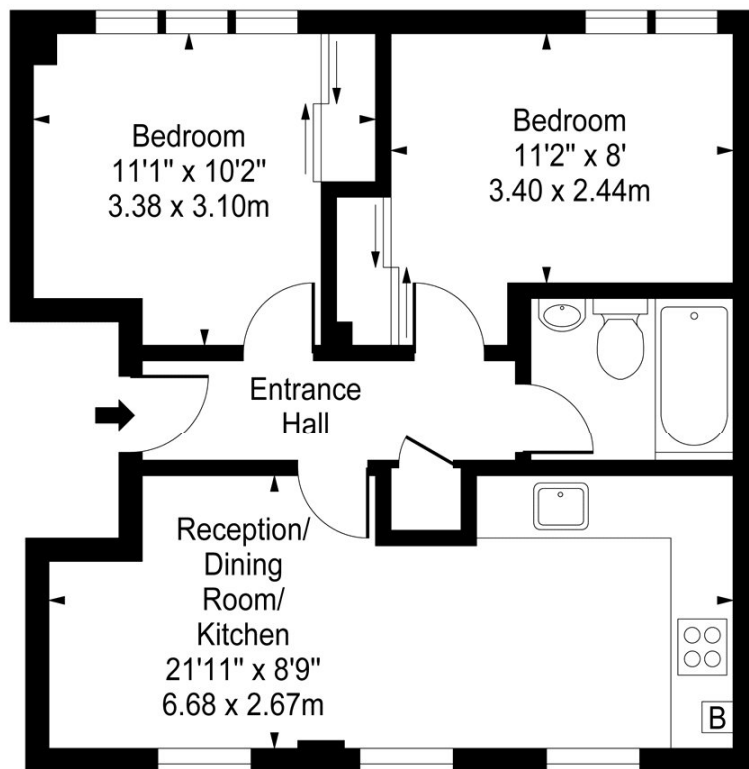
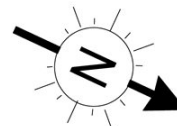
A fantastic two bedroom apartment situated on the ground floor of this beautifully converted residence. The building comprises six apartments, each offering flexible accommodation with stylish bespoke specification of the highest quality throughout. All of the available apartments benefit from open plan living and kitchen spaces with wood flooring throughout and carpets in the bedrooms. Other benefits include a telephone entry system. Loveridge Mews is located within easy access to Kilburn or West Hampstead Underground (Jubilee line) and Overground stations as well as the Thameslink.

- Two Bedrooms
- Ground Floor
- Open plan living and kitchen
- Telephone entry system
- Newly Refurbished
- Well Proportioned Accommodation
- Leasehold





# Loveridge Mews, NW6



Ground Floor

Approx Gross Internal Area **485 Sq Ft - 45.05 Sq M**

For Illustration Purposes Only - Not To Scale

[www.goldlens.co.uk](http://www.goldlens.co.uk)

Ref. No. 003491M

Agents Note: Whilst every care has been taken to prepare these sales particulars, they are for guidance purposes only. All measurements are approximate are for general guidance purposes only and whilst every care has been taken to ensure their accuracy, they should not be relied upon and potential buyers are advised to recheck the measurements