

## Canterbury House, Canterbury Road, London, NW6

**£438 per week**  
**Subject to contract**

This beautiful two bedroom duplex apartment is situated on the ground and first floors of this luxurious contemporary warehouse conversion. The property boasts exceptional natural light throughout with its oversized windows, an open plan fully fitted kitchen / reception room, one bedroom with fitted wardrobes on the ground floor, master bedroom with fitted wardrobes and an en-suite bathroom on the first floor along with a family bathroom. The apartment has been finished to the highest standard throughout. Further benefiting from access to the gym on the lower ground floor.

Canterbury lofts is ideally located in Kilburn for access to a range of excellent amenities - including shops, bars and bistros with Queens Park being only a short walk away. Canterbury House is located within in a short walk to Kilburn Park Underground Station.

- TWO BEDROOM DUPLEX APARTMENT
- TWO BATHROOMS
- OPEN PLAN KITCHEN / RECEPTION ROOM
- CONTEMPORARY
- ACCESS TO THE GYM
- AVAILABLE NOW
- FURNISHED

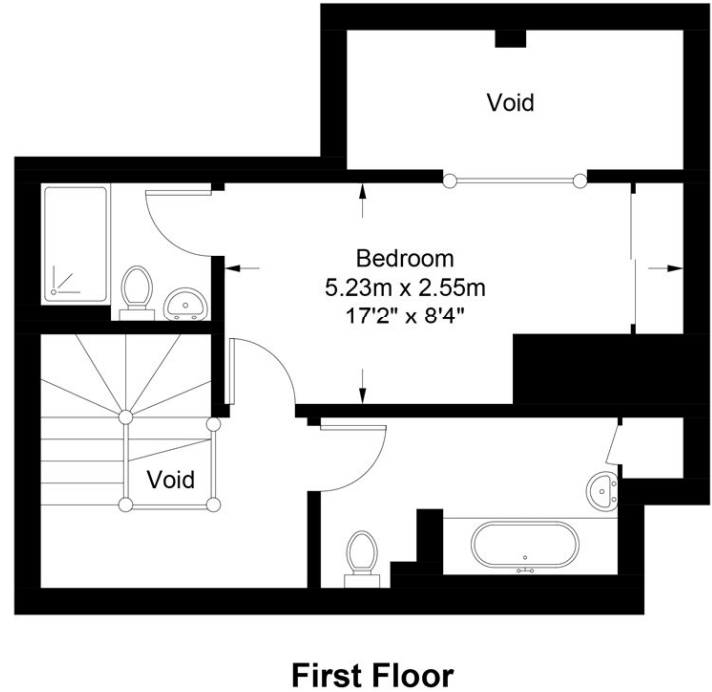
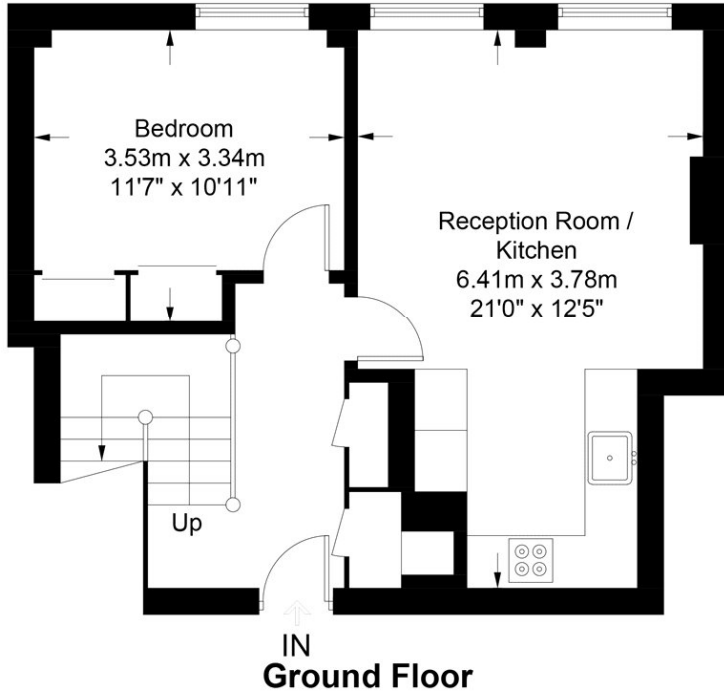






## Canterbury, NW6

Approximate Gross Internal Area = 842 sq ft / 78.2 sq m  
(Excluding Void)



This plan is for layout guidance only. Not drawn to scale unless stated. Windows and door openings are approximate. Whilst every care is taken in the preparation of this plan, please check all dimensions, shapes and compass bearings before making any decisions reliant upon them. (ID666944)

Energy Efficiency Rating		Current	Potential
Very energy efficient - lower running costs			
(92+)	<b>A</b>		
(81-91)	<b>B</b>		
(69-80)	<b>C</b>	77	77
(55-68)	<b>D</b>		
(39-54)	<b>E</b>		
(21-38)	<b>F</b>		
(1-20)	<b>G</b>		
Not energy efficient - higher running costs			
England, Scotland & Wales		EU Directive 2002/91/EC	

Agents Note: Whilst every care has been taken to prepare these sales particulars, they are for guidance purposes only. All measurements are approximate and for general guidance purposes only and whilst every care has been taken to ensure their accuracy, they should not be relied upon and potential buyers are advised to recheck the measurements