

## Canterbury House, Canterbury Road, London, NW6

**£395 per week s**  
**Subject to contract**

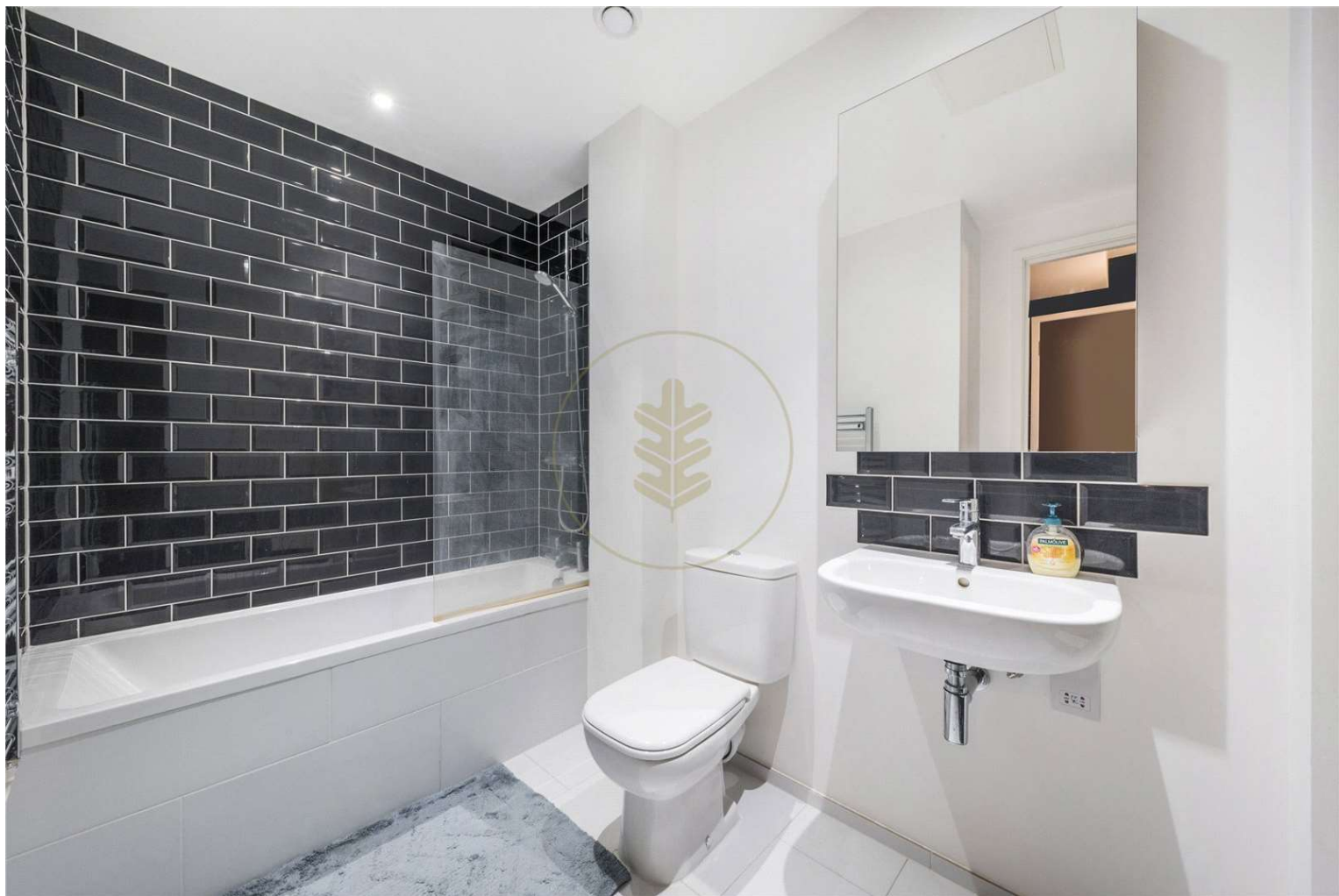
This beautiful one bedroom apartment is situated on the first floor of this luxurious contemporary warehouse conversion. The property has been finished to an extremely high standard throughout benefiting from oversized windows with lots of natural light throughout. A modern/contemporary open plan fully fitted kitchen / reception room, a great sized bedroom and a family bathroom. Further benefiting from access to the residents only gym.

Canterbury lofts is ideally located in Kilburn for access to a range of excellent amenities - including shops, bars and bistros with Queens Park being only a short walk away. Canterbury House is located within in a short walk to Kilburn Park Underground Station.

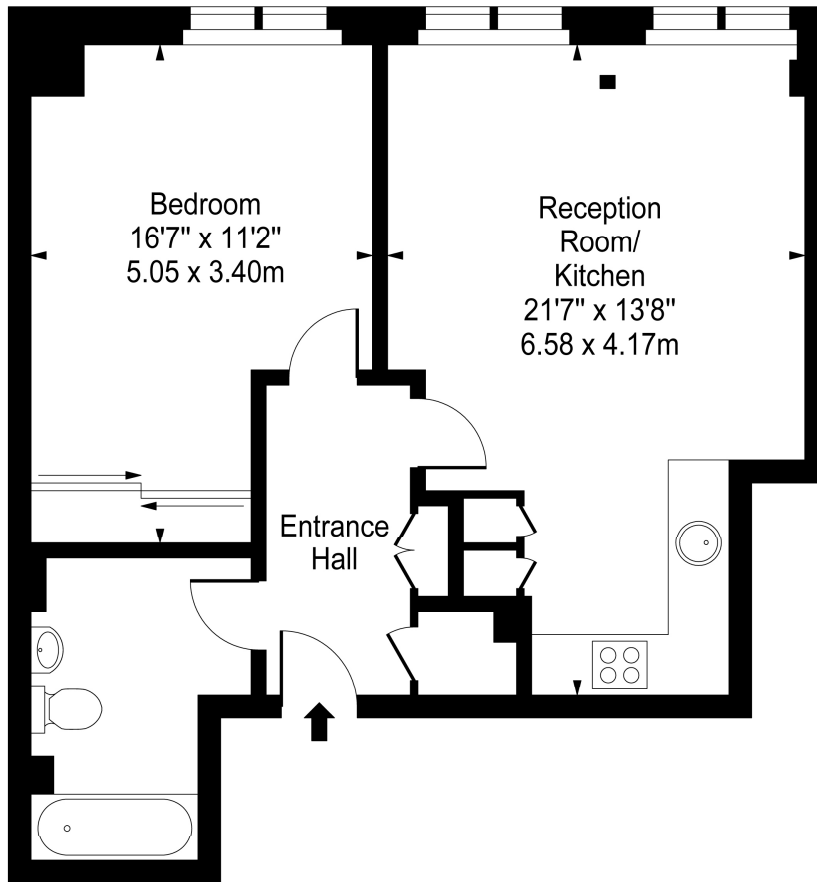
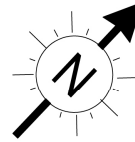
Available now on a part furnished basis

- One bedroom apartment
- One bathroom
- First floor
- Open plan kitchen reception room
- Gym
- Communal roof terrace





# Canterbury House, Canterbury Road, NW6



First Floor

Approx Gross Internal Area **556 Sq Ft - 51.65 Sq M**

For Illustration Purposes Only - Not To Scale

[www.goldlens.co.uk](http://www.goldlens.co.uk)

Ref. No. 009242J

Energy Efficiency Rating		
	Current	Potential
Very energy efficient - lower running costs		
(92+) <b>A</b>		
(81-91) <b>B</b>		
(69-80) <b>C</b>	<b>78</b>	<b>78</b>
(55-68) <b>D</b>		
(39-54) <b>E</b>		
(21-38) <b>F</b>		
(1-20) <b>G</b>		
Not energy efficient - higher running costs		
England, Scotland & Wales	EU Directive 2002/91/EC	

Agents Note: Whilst every care has been taken to prepare these sales particulars, they are for guidance purposes only. All measurements are approximate and for general guidance purposes only and whilst every care has been taken to ensure their accuracy, they should not be relied upon and potential buyers are advised to recheck the measurements