



Boydell Court, St. Johns Wood Park, London, NW8

£1,100 per week + fees
Subject to contract

Beautifully presented, this three double bedroom apartment is set within the ever popular Boydell Court, conveniently located within the heart of St John's Wood. The apartment which is situated on the first floor has been newly refurbished throughout and features a fully fitted kitchen, dining / living room fabulous for entertaining, three bedrooms, each with fitted wardrobes, two with en-suite bathrooms and a family shower room. Further benefits include air-conditioning throughout, 24hr concierge, lift and a parking space available to rent by separate negotiation. Boydell Court is located within easy reach of the amenities and transport links of Swiss Cottage and St John's Wood.

Available now on a furnished or unfurnished basis.

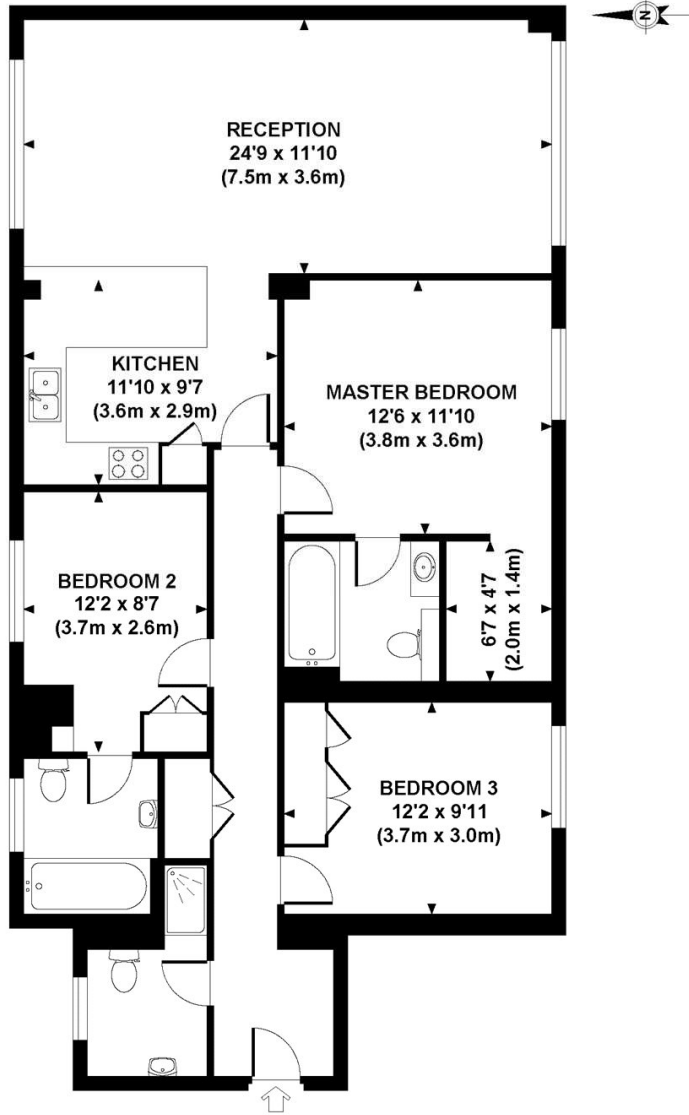
Please contact Oakhill Residential to check the availability of other apartments in the development

- THREE BEDROOMS
- TWO EN-SUITE BATHROOMS
- SHOWER ROOM
- FIRST FLOOR
- PORTERED GATED DEVELOPMENT
- AVAILABLE NOW
- FURNISHED OR UNFURNISHED





7 BOYDELL COURT
FIRST FLOOR



APPROXIMATE GROSS INTERNAL FLOOR AREA 1111SQ FT / 103 SQ M

Although every attempt has been made to ensure accuracy, all measurements are approximate. The floor plan's for illustrative purposes only and not to scale. Measured in accordance to RICS standards. DE-PHOTOGRAPHY.NET

Energy Efficiency Rating		Current	Potential
Very energy efficient - lower running costs			
(92+)	A		
(81-91)	B		
(69-80)	C		
(55-68)	D	61	61
(39-54)	E		
(21-38)	F		
(1-20)	G		
Not energy efficient - higher running costs			
England, Scotland & Wales		EU Directive 2002/91/EC	

Agents Note: Whilst every care has been taken to prepare these sales particulars, they are for guidance purposes only. All measurements are approximate are for general guidance purposes only and whilst every care has been taken to ensure their accuracy, they should not be relied upon and potential buyers are advised to recheck the measurements