



St Johns Wood Park, London, NW8

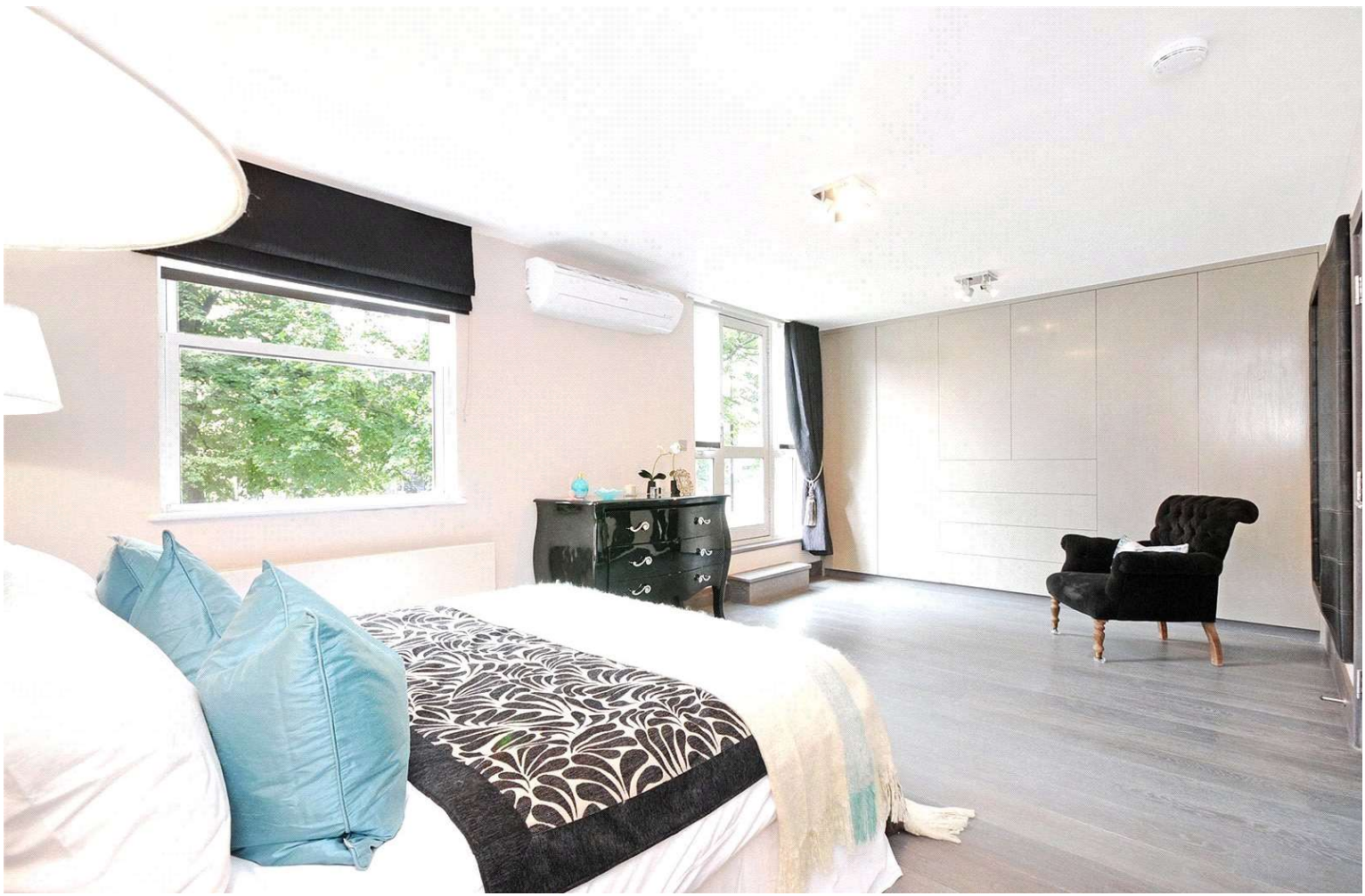
£2,475 per week
Subject to contract

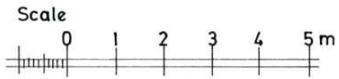
An immaculately presented four bedroom new build house, conveniently located in the heart of St John's Wood, set within the ever popular gated development Boydell Court. Arranged over three floors and offering well-proportioned accommodation, this beautiful home offers a fantastic reception / dining area with French doors leading out to a picturesque garden, separate kitchen, principle bedroom with an en-suite bathroom and direct access to a private balcony, three further double bedrooms, two family bathroom and guest cloakroom. Further benefiting from, air-conditioning, underfloor heating and 24hr concierge. Parking is on a first come, first serve basis, with a further option to rent a space by separate negotiation. St Johns Wood Park is located within easy reach of the amenities and transport links of Swiss Cottage and St John's Wood (Jubilee line).

Available now on a furnished or unfurnished basis.

- IMMACULATLY PRESENTED
- FOUR BEDROOM TOWN HOUSE
- BEAUTIFUL GARDEN
- BALCONY OFF MASTER BEDROOM
- THREE FURTHER BEDROOMS
- THREE BATHROOMS PLUS GUEST WC
- AVAILABLE NOW

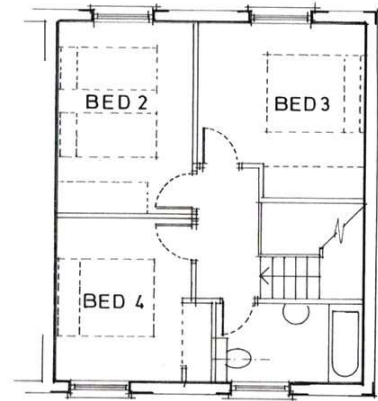
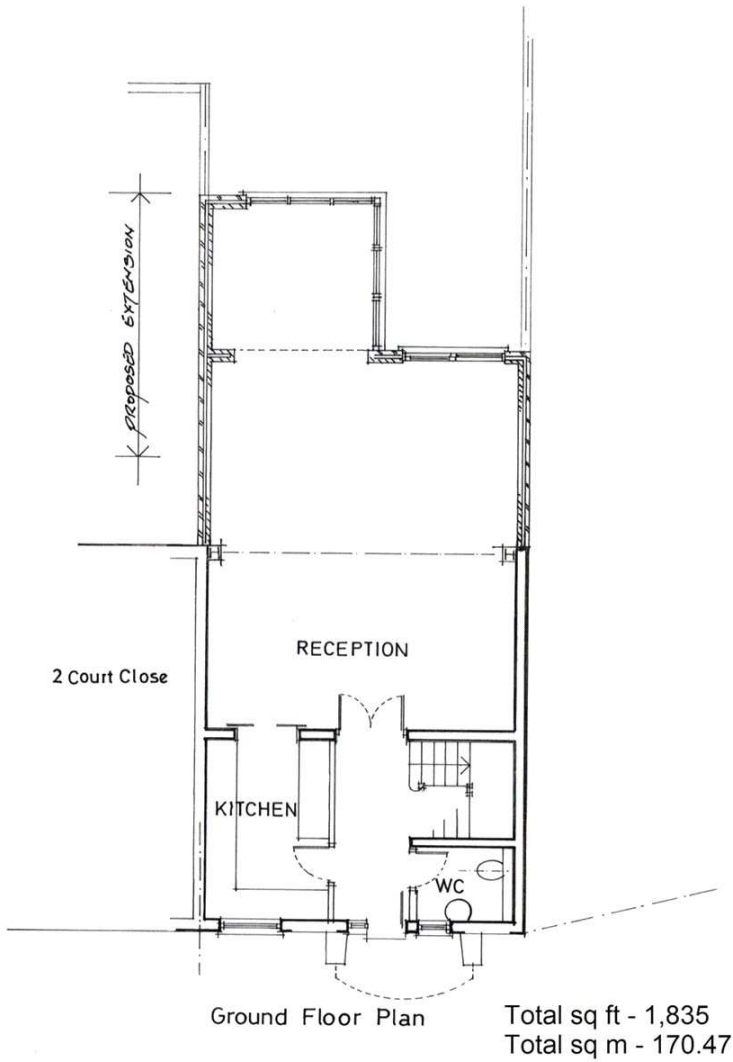




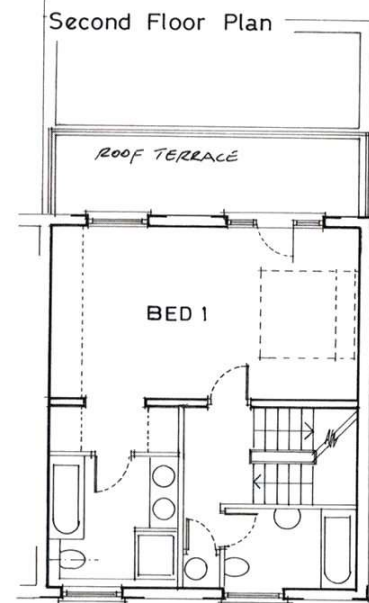


House 1 Court Close

St Johns Wood Park
London NW8 6NN



Second Floor Plan



First Floor Plan

Agents Note: Whilst every care has been taken to prepare these sales particulars, they are for guidance purposes only. All measurements are approximate and are for general guidance purposes only and whilst every care has been taken to ensure their accuracy, they should not be relied upon and potential buyers are advised to recheck the measurements