

Boydell Court, St. Johns Wood Park, London, NW8

£999 per week + fees
Subject to contract

A beautifully interior designed three double bedroom apartment set on the second floor within the ever popular Boydell Court, conveniently located in the heart of St John's Wood. Immaculately presented throughout, the apartment offers a bright and spacious open plan dining / reception room, separate kitchen, three bedrooms, two with en suite showers and one with an en-suite bathroom. Further features include 24hr concierge, lift, air-conditioning and wooden flooring in the bedrooms. A parking space is available to rent by separate negotiation. St Johns Wood Park is located within easy reach of the amenities and transport links of Swiss Cottage and St John's Wood.

Available now on a furnished/unfurnished basis. Please contact Oakhill Residential to check the availability of other apartments in the development

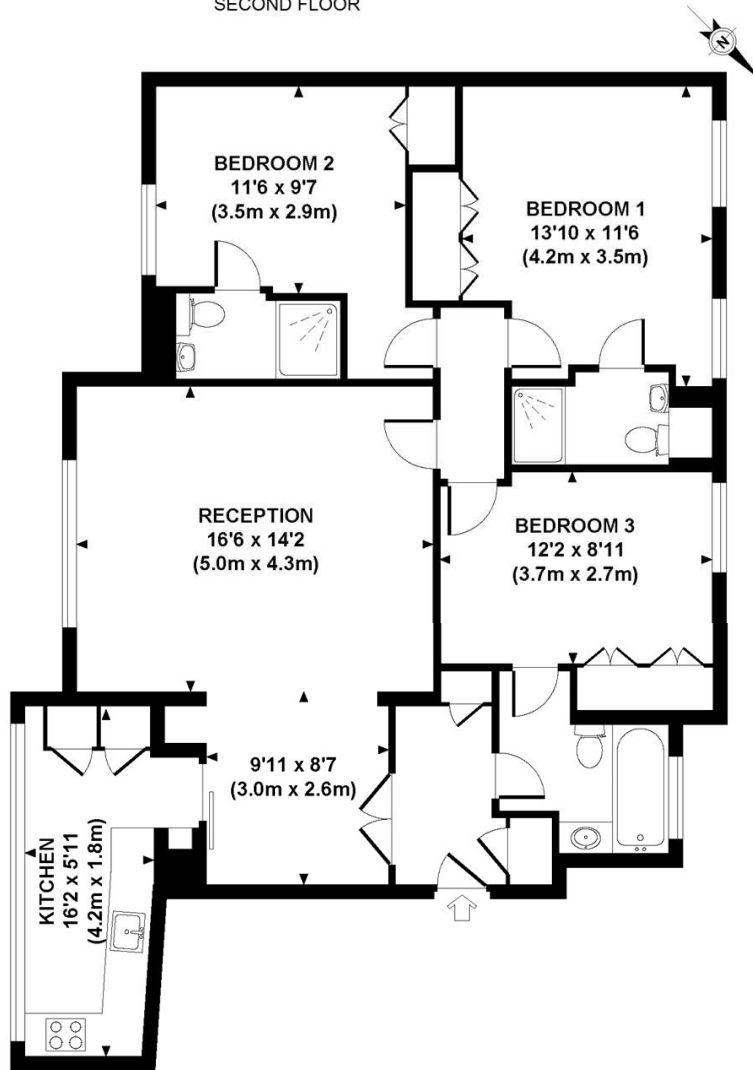
- THREE BEDROOMS
- THREE BATHROOMS
- SECOND FLOOR
- PORTERED GATED DEVELOPMENT
- FURNISHED OR UNFURNISHED
- AVAILABLE NOW





FLAT 9 BOYDELL COURT

SECOND FLOOR



APPROXIMATE GROSS INTERNAL AREA 1062 SQ FT / 99 SQ M

Although every attempt has been made to ensure accuracy, all measurements are approximate. The floor plan's for illustrative purposes only and not to scale. Measured in accordance to RICS standards. DE-PHOTOGRAPHY.NET

Energy Efficiency Rating		Current	Potential
Very energy efficient - lower running costs			
(92+)	A		
(81-91)	B		
(69-80)	C		
(55-68)	D	70	70
(39-54)	E		
(21-38)	F		
(1-20)	G		
Not energy efficient - higher running costs			
England, Scotland & Wales		EU Directive 2002/91/EC	

Agents Note: Whilst every care has been taken to prepare these sales particulars, they are for guidance purposes only. All measurements are approximate are for general guidance purposes only and whilst every care has been taken to ensure their accuracy, they should not be relied upon and potential buyers are advised to recheck the measurements